



2023 SPECIALTY TIRE AND WHEEL CATALOG



WWW.CARLSTAR.COM





WELCOME

To Our Valued Customers:

Carlstar is proud to be your global partner for original equipment and aftermarket specialty tires and wheels. Our product offering spans a wide range of industries from the agriculture, construction, outdoor power equipment, powersports, high speed trailer and flat free/ chore markets.

The diverse portfolio of solutions are offered under several leading brands including Carlisle® and Carlstar tires and wheels, ITP® tires and wheels, Cragar®, Black Rock® and Unique® wheels and Marastar® tires for chore applications.

Carlstar employs over 3,400 passionate professionals around the globe ready and willing to assist you. With 17 facilities located in 4 countries, we strive to ensure you receive the right products where and when you need them. This edition of the Specialty Tire and Wheel Catalog affords easy access to the latest product information, technical specifications, tread designs and applications. Use these color guides to easily find the product that serves your application



Carlstar has created a culture of converting great ideas into advanced products and a legacy of excellence in product innovation, quality, and customer service.

For additional information, please visit www.carlstar.com or contact your Carlstar Representative. We appreciate your continued partnership.



OUTDOOR POWER EQUIPMENT

TURF SAVER® - Turf-friendly market leading design for residential mowing applications.	6
TURF SAVER® II - Second generation Turf Saver with round shoulder design for residential applications.	7
TURF TRAC R/S - Versatile turf tire with balanced profile for grounds care and other applications.	7
TURF MASTER® PLUS - Professional grade tire optimized for stability and traction.	7
TURF MASTER®/MULTI-TRAC C/S - Commercial grade performance optimizes stability and traction.	8 – 9
TURF ARMOR® - Updated, rugged styling with excellent traction.	10
VERSA TURF® - Radial construction for improved flotation while maximizing traction.	10
ULTRA TRAC - Ultra high flotation tires. Popular for large grounds maintenance equipment applications.	10
FAST TRAX® - Unique low profile tire features aggressive tread and great traction.	11
TURF CTR - Tread lightly with this low impact, round shouldered design.	11
SMOOTH - Turf-friendly smooth profile for pro mowers and grounds maintenance equipment.	12
STRAIGHT RIB - Another top turf care design. Great for ZTR, golf and other applications.	12
AT101 CHEVRON - Special lug with bar design for ZTR drive tires and other applications.	13
WHEELBARROW - Classic wheelbarrow rib for lawn carts, spreaders and wheelbarrows.	13
STUD - Versatile stud tread suitable for a variety of rugged applications.	14
SAWTOOTH® - Functional tread design popular for material handling equipment.	14
SUPER LUG/POWER TRAC/TRU POWER - Aggressive traction used for tiller and garden tractor applications.	15
FLAT FREE - Flat free assemblies for lawn and garden, wheelbarrows, hand trucks and lawn mowers.	16
TOUR MAX® - Upscale choice for golf cars and closed-community vehicles.	17
LINKS® - Premium level golf tire product with unmatched stability, durability and puncture resistance.	17
FAIRWAY PRO - A workhorse value delivering maximum golf course service.	17
CLASSIC RB - Classic RB is a high load capacity tire with a broad footprint for maximum turf protection.	17
INDUSTRIAL TRAX - Versatile tire designed for hard surface utility vehicle applications.	18
SNOW HOG - Snow thrower design with added traction.	18
XTRAC® - Aggressive tread for snow thrower and other push-behind applications.	19



POWERSPORTS

AT489 - A Powersports Industry favorite. The 489 is light, strong and stable.	22
AT489 II - Next generation of the 489 delivers dependable performance on a variety of terrains.	23
489 XD - Built on a proven design, but upgraded for demanding applications.	23
TRAIL WOLF® - Forward traction design with extended wear compound for recreational use.	24
DURA TRAIL® - All-purpose tire with improved shoulder protection.	24
A-C-T - Radial construction, All-Conditions-Tire. Deep self-cleaning open tread.	25
A-C-T HD - Heavy duty All-Conditions-Tire with increased puncture resistance and load capabilities.	25
STRYKER® - Chevron design all-purpose tire that is work ready and self-cleaning.	26
WORK MATE® - Perfect balance of traction, stability and control for utility UTVs.	26
PXT2 - Designed for heavy payload applications.	26
BLACK ROCK® - Built strong and ready for any trail.	27
TURF TAMER - From competitive track to recreation, the Turf Tamer is a longtime favorite.	27
VERSA TRAIL® ATR - All-purpose utility with tough-tread, durable 6 ply rated construction.	28
VERSA TRAIL® XTR - Extreme performance on multiple surfaces for upgraded SxS vehicles.	28
VERSA TRAIL® XD - Specifically for rental fleets and work sites.	28
ALL TRAIL® - Excellent for utility on pavement, concrete and hard-packed soil applications.	29
ALL TRAIL® II - An extension of the All Trail line. Workhorse applications.	29
HD FIELD TRAX - All around get-it-done field, farm and general outdoor favorite.	30
KNOBBY - Classic knobby tread design yielding both puncture resistance and traction.	30



TRAILER

RADIAL TRAIL® HD - Radial trailer tire offers increased tire life.	34
ULTRA SPORT RH - Low profile design that provides a high performance look.	34
SPORT TRAIL® - Bias construction with a radial look.	35
SPORT TRAIL® LH - Perfect for boat, cargo, horse and stock, utility and specialty trailers.	35
USA TRAIL® - Complete line of bias products for applications requiring durable performance.	36
CSL 16 STEEL - Heavy duty hauling capabilities for large equipment and extremely heavy loads.	36
SURE TRAIL - Designed for marine applications.	36
EXTRA GRIP - Perfect for extra grip.	36



AGRICULTURE / CONSTRUCTION

FARM SPECIALIST® F-2 TRIPLE RIB - Triple rib front for improved steering in loose soil.	40
FARM SPECIALIST® F-2M QUAD RIB - Quad rib front design. Flotation and variable soil steering.	40
FARM SPECIALIST® F-3 INDUSTRIAL FRONT - Rugged tread construction for front tractor steering applications.	40
FARM SPECIALIST® F-3 RADIAL IMPLEMENT - Radial construction with IF technology.	41
FARM SPECIALIST® F-1 HIGHWAY SERVICE IMPLEMENT - Designed for towed vehicle applications at intermittent highway speeds.	41
FARM SPECIALIST® HF-1 IMPLEMENT - Wide flotation implement tire for balers, wagons and harvest equipment.	42
FARM SPECIALIST® I-1 IMPLEMENT - Implement tire for wagons, tankers, seeders, balers and other flotation applications.	42
TRAC CHIEF® I-3 - Outstanding traction on implements and backhoes.	43
FARM SPECIALIST® TB - Primarily used on CUT tractors, designed for improved traction and self-cleaning.	43
FARM SPECIALIST® R-1 - Multi-angle long bar tread for general farming applications.	44
TURF PRO R-3 / TURF PRO PLUS R-3 - Flotation tread design for general turf and mowing applications.	44
MULTI-TRAC CS R-3 - For general turf and mowing applications for minimal ground disturbance.	44
USA LOADER® - Aerial platform lifts, backhoes, and skid steer tractor applications.	45
TRAC CHIEF® - Standard duty skid steer and tractor traction applications.	45
GROUND FORCE 600/625 XT - Built for backhoe loaders in all weather conditions.	45
GROUND FORCE® 400 R-4 - Ideal for general-duty skid steer applications.	46
GUARD DOG® HD - Premium level performance for skid steer and backhoe applications.	46
GROUND FORCE 400 ULTRA - Perfect for severe service skid steer applications.	47
ULTRA GUARD® MX - Heavy Duty skid steer tire protects against damage from worksite debris.	47
GROUND FORCE 400 MX - Designed for severe duty, multi-surface skid steer applications.	47
FSTR - Large diameter tire designed specifically for Agriculture.	48
CSL 24 - Large diameter tire designed specifically for Agriculture.	49



INDUSTRIAL

INDUSTRIAL DEEP TRACTION - Standard service application for forklifts.	52
ROAD ROLLER - Heat resistant design for paving equipment.	52
INDUSTRIAL ALL PURPOSE - Multi-purpose tire for industrial equipment.	52
PREMIUM WIDE TRAC - Forklift and material handling applications - premium levels.	53
GROUND FORCE® ULTRA RIB GSE - Deep tread design with premium compounding for ground support equipment.	53
GROUND FORCE® 300 G-2 - Motor grader tire designed for stability and good traction in all weather conditions.	54
GROUND FORCE® LFT - Low profile tire designed for boom lifts.	54



WHEELS

AG WHEELS - Steel - Boxed	58
TRAILER WHEELS - Steel and Aluminum Trailer Wheels - Boxed	59 – 60



TUBES AND FLAPS

TUBE FITMENTS & APPLICATIONS	64 – 70
TUBE STEMS	71

Turf and Lawn

RESIDENTIAL



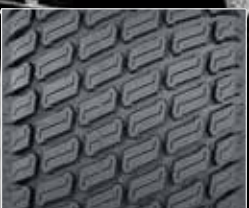
TURF SAVER® 6



TURF SAVER® II 7



TURF TRAC R/S 7



TURF MASTER PLUS 7

PROFESSIONAL



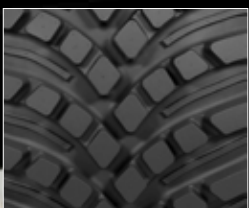
TURF MASTER® 8



MULTI-TRAC C/S 8



TURF ARMOR 10



VERSA TURF 10



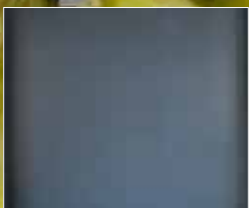
ULTRA TRAC 10



FAST TRAX® 11



TURF CTR 11



SMOOTH 12



STRAIGHT RIB 12



AT 101 CHEVRON 13

Chore



WHEELBARROW 13



STUD 14



SAWTOOTH® 14



SUPER LUG 15



POWER TRAC 15



TRU POWER 15



FLAT FREE 16



Golf / Utility



TOUR MAX® 17



LINKS® 17



FAIRWAY PRO 17



CLASSIC RB 17



INDUSTRIAL TRAX 18

Snow



SNOW HOG 18



XTRAC® 19



CONSUMER, COMMERCIAL TURF EQUIPMENT, GOLF CARS AND UTILITY VEHICLES

TURF SAVER®

With its classic square shouldered design, the Turf Saver tire is the market leader for residential riding lawn mowers worldwide. The flat profile and chevron tread provide excellent traction. Its turf-friendly design and breadth of line make it versatile in both application and fitment.

SIZE	PRODUCT CODE	PLY	DIAMETER†	WIDTH†	RIM WIDTH	MAX LOAD @ 10 MPH	MAX PSI	TIRE WEIGHT
9x3.50-4	5110111	4	8.8	3.6	2.50	260	50	2.0
4.10-4	5110251	2	10.9	3.8	2.50	225	24	3.0
11x4.00-4	5110271	2	11.2	4.1	2.50	215	22	3.0
11x4.00-5	5110101	2	10.9	4.0	3.00	210	22	4.0
13x5.00-6	5110201	2	12.8	4.7	3.50	290	20	4.0
13x5.00-6	5110211	4	13.0	4.8	3.50	440	40	5.0
13x6.50-6	5111851	2	13.3	6.5	4.50	320	14	6.0
15x6.00-6	5110301	2	14.3	6.4	4.50	365	14	5.0
16x6.50-8	5110951	2	16.3	6.6	5.38	385	12	6.0
16x7.50-8	5112001	2	16.4	7.0	5.38	480	12	8.0
4.80-8	5112501	2	16.5	4.8	3.75	440	20	6.0
18x6.50-8	5110981	2	17.2	6.4	5.38	520	14	7.0
18x7.50-8	5111021	4	18.0	7.2	5.38	805	24	10.0
18x8.50-8	5110701	2	17.9	8.2	7.00	520	10	10.0
18x9.50-8	5110841	2	17.8	9.5	7.00	695	12	11.0
18x9.50-8	6L05011	4	17.9	9.4	7.00	935	20	12.0
18x9.50-8	511082	6	18.5	9.5	7.00	1295	36	12.0
20x8.00-8	5110801	2	19.2	9.0	7.00	600	10	11.0
20x10.00-8	5111011	2	19.6	10.4	7.00	760	10	14.0
20x8.00-10	5111111	4	20.0	7.9	6.00	910	24	13.0
20x10.00-10	5111161	4	20.1	8.8	6.00	1230	24	15.0
22x9.50-12	5110511	2	21.3	8.9	7.00	785	12	15.0
23x8.50-12	5110901	2	23.1	8.5	7.00	715	10	14.0
23x9.50-12	5111001	2	23.2	9.4	7.00	910	12	15.0
23x10.50-12	6L03381	2	22.8	10.4	8.50	880	10	18.0
23x10.50-12	6L05031	4	22.9	10.3	8.50	1320	20	19.0

All Outdoor Power Equipment are Non-Highway Service (NHS) Tires. † Indicates mounted diameter and mounted width



TURF SAVER® II

TURF TRAC R/S

TURF MASTER PLUS

TURF SAVER® II

The Turf Saver II tire is a modified version of the Turf Saver. It features a round shoulder profile and is designed for use on residential riding lawn mowers. It is also commonly used for towable lawn carts, spreaders, sprayers and other mower attachments.

SIZE	PRODUCT CODE	PLY	DIAMETER†	WIDTH†	RIM WIDTH	MAX LOAD @ 10 MPH	MAX PSI	TIRE WEIGHT
15x6.00-6	5112301	2	14.3	5.9	4.50	365	14	4.3
20x8.00-8	5112801	2	19.1	8.9	7.00	600	10	8.8

All Outdoor Power Equipment are Non-Highway Service (NHS) Tires. † Indicates mounted diameter and mounted width

TURF TRAC R/S

The Turf Trac R/S tire offers all-around best performance in our residential product line. Applications include grounds care equipment, zero turn mowers and utility vehicles.

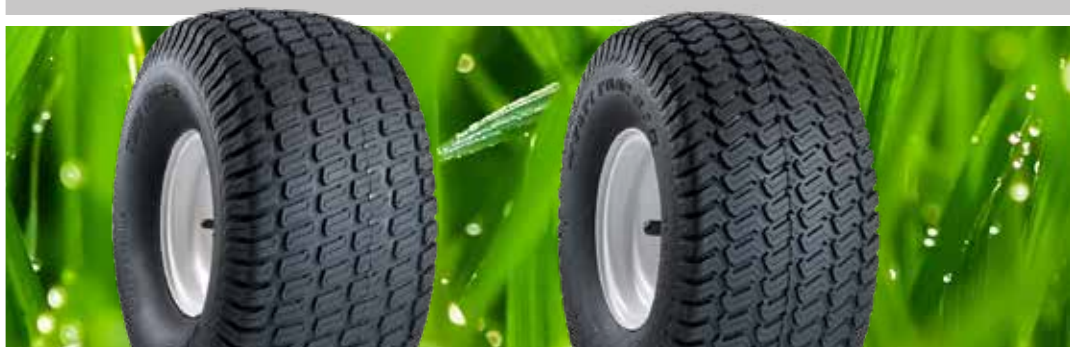
SIZE	PRODUCT CODE	PLY	DIAMETER†	WIDTH†	RIM WIDTH	MAX LOAD @ 10 MPH	MAX PSI	TIRE WEIGHT
15x6.00-6	5753451	2	14.2	6.4	4.50	365	14	4.7
16x6.50-8	6L02651	4	16.0	6.7	5.38	615	28	7.0
18x6.50-8	575324	8	17.6	6.6	5.38	1170	58	12.0
18x8.50-8	5753311	4	17.7	8.1	7.00	825	22	10.0
20x10.00-8	5753411	4	19.7	9.7	7.00	1200	22	12.0
22.5x10.00-8	5753B71	4	22.6	10.5	7.00	1390	22	19.0
25x12.00-9	50D3T7	4	25.2	12.2	10.00	1820	20	22.0
20x10.00-10	50D362	4	19.6	9.4	8.00	1170	22	13.0
20x12.00-10	5753151	4	19.8	10.1	7.00	1320	20	16.0
22x9.50-10	5753N11	4	21.7	9.5	7.00	965	14	16.0
24x9.50-10	5753P2	4	24.3	9.8	7.75	1430	22	17.0
24x12.00-10	5753A61	4	24.4	11.9	7.75	1710	20	24.0
23x10.50-12	5753671	4	22.6	10.2	8.50	1320	20	15.0
24x12.00-12	575390	6	23.3	11.0	8.50	2270	32	22.0
26x12.00-12	50D363	10	25.3	12.4	10.50	3300	52	26.0

All Outdoor Power Equipment are Non-Highway Service (NHS) Tires. † Indicates mounted diameter and mounted width

TURF MASTER® PLUS

Turf Master Plus professional grade tire features our most durable compound with deep tread lugs in a profile optimized for stability and traction.

TIRE	SIZE	PRODUCT CODE	PLY	DIAMETER†	WIDTH†	RIM WIDTH	MAX LOAD @ 10 MPH	MAX PSI	TIRE WEIGHT
Turf Master Plus	22x12.00-12	6L09811	4	23.0	11.5	9.5	1480	20	23.0
Turf Master Plus	23x12.00-12	6L09821	4	23.9	11.5	9.5	1610	20	23.0
Turf Master Plus	24x12.00-12	6L09831	4	24.9	11.7	9.5	1710	20	23.0



TURF MASTER

MULTI-TRAC C/S

TURF MASTER® / MULTI-TRAC C/S

Turf Master / Multi-Trac C/S professional grade tires feature our most durable compound with deep tread lugs in a profile optimized for stability and traction.

TIRE	SIZE	PRODUCT CODE	PLY	DIAMETER†	WIDTH†	RIM WIDTH	MAX LOAD @ 10 MPH	MAX PSI	TIRE WEIGHT
Turf Master®	13x6.50-6	5112491	4	13.4	6.1	4.50	480	28	6.0
Turf Master®	15x6.00-6	5112521	4	14.4	6.0	4.50	565	30	7.0
Turf Master®	15x6.50-8	5112531	2	15.0	6.2	5.38	385	14	7.0
Turf Master®	16x6.50-8	5114011	4	16.5	6.3	5.38	615	28	8.0
Turf Master®	16x7.50-8	5114021	4	16.5	7.0	5.38	675	24	9.0
Turf Master®	18x6.50-8	5114171	4	17.4	6.4	5.38	760	28	8.0
Turf Master®	18x7.50-8	6L09091	4	17.9	7.3	5.38	805	24	10.0
Turf Master®	18x8.50-8	5114041	4	18.3	8.1	7.00	825	22	11.0
Multi-Trac C/S	18x8.50-8	574365	8	17.6	8.3	7.00	1280	44	15.0
Turf Master®	18x9.50-8	5114131	4	18.1	9.2	7.00	1050	24	12.0
Turf Master®	18x9.50-8	6L16641	6	18.1	9.2	7.00	1320	36	12.0
Multi-Trac C/S	18x9.50-8	574399	6	18.2	8.6	7.00	1295	36	13.0
Multi-Trac C/S	20x8.00-8	6L03221	2	19.2	9.0	7.00	600	10	11.0
Turf Master®	20x8.00-8	6L09121	2	19.9	8.3	7.00	600	10	11.0
Turf Master®	20x10.00-8	6L09371	2	19.9	10.1	7.00	760	10	13.9
Turf Master®	20x10.00-8	5114051	4	19.9	10.3	7.00	1200	22	15.0
Turf Master®	20x12.00-8	6L15741	2	19.9	11.3	8.50	910	10	15.2
Multi-Trac C/S	18x8.50-10	5743U11	4	18.0	8.1	7.00	825	22	12.0
Multi-Trac C/S	18x8.50-10	6L0174	6	18.2	8.1	7.00	1050	32	11.0
Multi-Trac C/S	18x10.50-10	5743E51	4	17.9	10.2	8.50	990	20	15.0
Turf Master®	20x7.00-10	5114271	4	20.5	7.7	6.00	910	26	13.0
Turf Master®	20x8.00-10	5114281	4	20.2	8.1	6.00	910	24	15.0
Turf Master®	20x10.00-10	5114161	4	20.0	8.8	6.00	1170	22	14.0
Turf Master®	20x10.00-10	6L07411	6	19.5	9.5	7.00	1430	32	17.0
Turf Master®	20x12.00-10	6L09161	2	19.8	11.0	8.50	910	10	16.0
Turf Master®	20x12.00-10	511257	4	20.1	10.3	8.00	1320	20	15.0
Turf Master®	22x10.00-10	511256	4	21.8	9.9	7.00	1360	22	16.0
Turf Master®	22x11.00-10	5112551	4	21.7	10.1	7.00	1480	22	16.0
Turf Master®	22x9.50-12	5114331	4	22.0	9.2	7.00	1305	24	17.0
Turf Master®	22x10.50-12	5114261	4	22.5	10.1	8.50	1295	20	18.0
Turf Master®	23x8.50-12	5114191	4	23.0	8.6	7.00	1100	22	14.2

All Outdoor Power Equipment are Non-Highway Service (NHS) Tires. † Indicates mounted diameter and mounted width



TURF MASTER® / MULTI-TRAC C/S (continued)

TIRE	SIZE	PRODUCT CODE	PLY	DIAMETER†	WIDTH†	RIM WIDTH	MAX LOAD @ 10 MPH	MAX PSI	TIRE WEIGHT
Multi-Trac C/S	23x8.50-12	574372	6	21.9	8.3	7.00	1430	34	19.0
Turf Master®	23x9.50-12	6L08381	4	23.0	9.2	7.00	1230	20	18.0
Turf Master®	23x10.50-12	5114081	4	23.3	10.0	8.50	1390	20	18.0
Turf Master®	23x10.50-12	6L16631	6	23.0	10.0	8.50	1760	32	19.0
Turf Master®	24x9.50-12	6L08371	4	23.6	9.5	7.00	1480	24	18.0
Turf Master®	24x12.00-12	5114091	4	23.6	11.4	8.50	1710	20	23.0
Multi-Trac C/S	25x9.00-12	574368	4	24.9	9.5	8.00	1520	24	18.0
Multi-Trac C/S	25x11.00-12	574369	4	25.2	10.8	8.00	1820	24	23.0
Multi-Trac C/S	26x9.50-12	6L04091	4	25.5	9.3	7.00	1520	20	21.0
Multi-Trac C/S	26x12.00-12	5743611	4	25.4	11.4	8.50	1760	20	26.0
Multi-Trac C/S	26x12.00-12	5743771	6	25.6	11.5	8.50	2270	30	27.0
Multi-Trac C/S	24x8.50-14	574324	4	23.8	8.4	7.00	1230	22	18.0
Multi-Trac C/S	25x8.50-14	574339	4	25.0	8.6	7.00	1320	22	21.0
Multi-Trac C/S	26x14.00-12	5743W7	4	25.5	14.0	10.50	2120	18	33.0
Multi-Trac C/S	25x8.50-14	574371	6	24.9	8.6	7.00	1650	32	24.0
Multi-Trac C/S	27x8.50-15	574348	4	26.6	8.5	7.00	1230	30	27.0
Multi-Trac C/S	27x8.50-15	574356	6	26.6	8.6	7.00	1570	45	26.0
Multi-Trac C/S	27x10.50-15	5743H6	4	27.5	10.2	8.00	1320	30	31.0
Multi-Trac C/S	27x10.50-15	560371	8	27.3	11.2	8.50	1870	60	33.0
Multi-Trac C/S	29x12.50-15	560454	6	29.2	12.2	10.00	1710	30	37.0
Multi-Trac C/S	29x12.50-15	560478	10	29.0	12.5	10.00	2470	60	40.0
Multi-Trac C/S	31x13.50-15	560362	4	31.5	13.5	10.00	2150	20	47.0

All Outdoor Power Equipment are Non-Highway Service (NHS) Tires. † Indicates mounted diameter and mounted width



TURF ARMOR

VERSA TURF

ULTRA TRAC

TURF ARMOR®

The Turf Armor's updated, rugged styling features a unique multi-angled tread pattern. The Turf Armor tread pattern is designed to fully connect with the ground resulting in evenly distributed ground pressure for excellent traction.

SIZE	PRODUCT CODE	PLY	DIAMETER†	WIDTH†	RIM WIDTH	MAX LOAD (LBS)	MAX PSI	TIRE WEIGHT
20x8.00-8	6L17931	4	20.0	8.4	7.00	965	22	12.0
20x10.00-8	6L17941	4	20.1	10.3	7.00	1200	22	16.0
20x7.00-10	6L19651	4	20.0	7.3	6.00	910	26	11.0
20x10.00-10	6L19641	4	20.0	9.5	7.00	1170	22	15.0
22x11.00-10	6L19631	4	22.0	10.4	7.00	1480	22	17.0
24x12.00-12	6L17951	4	23.8	11.7	9.50	1710	20	22.0

All Outdoor Power Equipment are Non-Highway Service (NHS) Tires. † Indicates mounted diameter and mounted width

VERSA TURF®

Designed with a radial construction for improved flotation, the Versa Turf reduces turf disturbance while maximizing traction with its 60% deeper tread depth compared to a standard R-3 tire design. Engineered with superior mud-shedding performance by featuring self-cleaning breaker bars in the tread and rounded shoulders. The radial construction and tread design make this the tire to have in snow and ice.

SIZE	PRODUCT CODE	PLY	DIAMETER†	WIDTH†	RIM WIDTH	MAX LOAD (LBS)	MAX PSI	TIRE WEIGHT
18x8.50R10	6L09621	4	18.7	7.4	6.00	825	22	13.0
23x8.50R12	6L13551	6	22.6	8.4	7.00	1820	50	21.0
24x12.00R12	6L13941	4	23.9	11.5	9.50	1710	20	27.0
26x12.00R12	6L0915	4	25.8	11.4	9.50	1760	20	33.0
12R16.5	6L13541	6	32.6	12.2	9.75	4180	40	61.0

All Outdoor Power Equipment are Non-Highway Service (NHS) Tires. † Indicates mounted diameter and mounted width

ULTRA TRAC

The Ultra Trac tire is the right approach for those specialized applications where high flotation and turf preservation is essential. With a wide, flat footprint and reduced void in the tread it offers maximum turf protection. Ultra Trac tires are most often utilized on golf and grounds maintenance equipment.

SIZE	PRODUCT CODE	PLY	DIAMETER†	WIDTH†	RIM WIDTH	MAX LOAD @ 10 MPH	MAX PSI	TIRE WEIGHT
24x13.00-12	529368	4	23.0	12.9	10.50	1760	18	27.0
24x13.00-12	529387	6	23.4	12.9	10.50	2270	28	28.0
26.5x14.00-12	529386	4	26.5	14.4	10.50	2150	18	33.0
29x14.00-15*	5293E6	6	28.6	14.3	11.00	1710	30	47.0

All Outdoor Power Equipment are Non-Highway Service (NHS) Tires. † Indicates mounted diameter and mounted width *NOTE: Max load @ 30 MPH



FAST TRAX®

The Fast Trax tire offers increased traction combined with a low profile and is typically used on professional riding mowers where hillside traction is desired.

SIZE	PRODUCT CODE	PLY	DIAMETER†	WIDTH†	RIM WIDTH	MAX LOAD @ 12.5 MPH	MAX PSI	TIRE WEIGHT
18x11.00-10	501043	4	17.7	9.7	8.50	1100	22	13.0

All Outdoor Power Equipment are Non-Highway Service (NHS) Tires.

† Indicates mounted diameter and mounted width



TURF CTR

The Turf CTR tire is a broad shouldered, low impact tire used on professional ZTR mowers when treading lightly is critical.

SIZE	PRODUCT CODE	PLY	DIAMETER†	WIDTH†	RIM WIDTH	MAX LOAD @ 12.5 MPH	MAX PSI	TIRE WEIGHT
22x11.00-8	511501	4	22.4	10.8	9.00	935	10	14.0

All Outdoor Power Equipment are Non-Highway Service (NHS) Tires.

† Indicates mounted diameter and mounted width



SMOOTH

STRAIGHT RIB

TRANSPORT VEHICLES, RIDING MOWERS, GARDEN TRACTORS, FARM EQUIPMENT AND WHEELBARROWS

SMOOTH

Commonly used on front swivel casters for professional ZTR mowers, the Smooth tire has tapered edges to facilitate easy swivel action without turf damage. The Smooth tire contains specially formulated rubber compounds for professional grade durability.

SIZE	PRODUCT CODE	PLY	DIAMETER†	WIDTH†	RIM WIDTH	MAX LOAD @ 12.5 MPH	MAX PSI	TIRE WEIGHT
8x3.00-4	5120081	4	8.2	2.9	2.50	120	30	2.0
9x3.50-4	5120101	4	8.9	3.7	2.50	260	50	3.0
11x4.00-5	5120111	4	11.2	4.1	3.00	330	46	3.0
11x6.00-5	5100521	4	11.5	4.7	3.25	455	42	5.0
13x5.00-6	5120211	4	12.7	4.8	3.50	440	40	5.0
13x6.50-6	5121861	4	12.9	5.9	4.50	480	28	6.0
15x6.00-6	6L09491	4	14.5	6.1	4.50	565	30	6.0
4.80-8	5120511	4	16.8	4.8	3.75	760	70	5.0
18x9.50-8	5109811	4	17.8	9.3	7.00	1020	24	12.0
18x10.50-10	6L0149	4	18.4	9.3	8.00	1100	24	13.2
20x10.00-10	586325	2	19.5	9.5	8.50	825	12	13.0

All Outdoor Power Equipment are Non-Highway Service (NHS) Tires.

† Indicates mounted diameter and mounted width

STRAIGHT RIB

The Straight Rib tire is designed with tread grooves to channel moisture away from the contact patch and provides a slight lateral traction which can be helpful when traversing mild inclines.

SIZE	PRODUCT CODE	PLY	DIAMETER†	WIDTH†	RIM WIDTH	MAX LOAD @ 10 MPH	MAX PSI	TIRE WEIGHT
11x4.00-5	5180111	4	11.1	4.2	3.00	330	46	4.0
13x5.00-6	5180211	4	12.8	4.7	3.50	440	40	5.0
13x6.50-6	5181861	4	13.0	5.9	4.50	480	28	6.0
15x6.00-6	5180311	4	14.4	6.1	4.50	565	30	6.0
16x6.50-8	5180961	4	16.0	6.5	5.38	615	28	7.0
18x9.50-8	518081	4	17.7	9.3	7.00	1020	24	10.0
20x10.00-10	5181161	4	20.0	8.8	6.00	1170	22	15.0

All Outdoor Power Equipment are Non-Highway Service (NHS) Tires. † Indicates mounted diameter and mounted width



AT101 CHEVRON

AT101 Chevron is a specialty lug design with bars that taper in the shoulder area. This feature, along with muted lug depth, allows it to be used as a drive tire on zero turn mowers when extra traction is needed.

SIZE	PRODUCT CODE	PLY	DIAMETER†	WIDTH†	RIM WIDTH	MAX LOAD @ 12.5 MPH	MAX PSI	TIRE WEIGHT
21x11.00-8	599044	4	21.0	10.8	8.50	1390	22	17.0
21x11.00-10	599050	4	20.9	10.4	8.50	1390	22	16.0
24x12.00-12	560352	4	24.0	12.0	9.50	1710	20	22.0

All Outdoor Power Equipment are Non-Highway Service (NHS) Tires.

† Indicates mounted diameter and mounted width



RIDING MOWERS, GARDEN TRACTORS, SNOW THROWERS, TILLERS, ATV'S AND UTILITY VEHICLES

WHEELBARROW

The Wheelbarrow tire is a versatile utility tire. Its rib design provides lateral traction. This tire is an excellent choice for lawn carts, spreaders and wheelbarrows.

SIZE	PRODUCT CODE	PLY	DIAMETER†	WIDTH†	RIM WIDTH	MAX LOAD @ 10 MPH	MAX PSI	TIRE WEIGHT
4.00 - 6	5134371	2	13.7	4.0	2.50	330	30	2.3
4.80 - 8	5130511	4	16.5	4.6	3.75	765	70	4.1

All Outdoor Power Equipment are Non-Highway Service (NHS) Tires.

† Indicates mounted diameter and mounted width



UTILITY CARTS, WHEELBARROWS, PRESSURE WASHERS, GENERATORS, HAND TRUCKS, LAWN EQUIPMENT, AND FUN CARTS

STUD

With its aggressive appearance, the Stud tire grips on a multitude of terrains including soft dirt and snow. Commonly used for utility applications, such as hand trucks, power washers and industrial carts.

SIZE	PRODUCT CODE	PLY	DIAMETER†	WIDTH†	RIM WIDTH	MAX LOAD @ 10 MPH	MAX PSI	TIRE WEIGHT
4.10-4	5160251	2	10.6	3.6	2.50	225	24	2.4
4.10-6	5160351	2	12.5	3.9	3.25	290	24	2.7
4.80-8	5160501	2	16.4	4.7	3.75	440	20	4.6
4.80-8	5164291	4	16.3	4.7	3.75	670	42	6.1

All Outdoor Power Equipment are Non-Highway Service (NHS) Tires.

† Indicates mounted diameter and mounted width



SAWTOOTH®

The Sawtooth tire delivers smooth rolling performance for utility based equipment. Commonly used for wheelbarrows, pressure washers, generators, hand trucks and lawn equipment, the Sawtooth tire is utilized in various applications.

SIZE	PRODUCT CODE	PLY	DIAMETER†	WIDTH†	RIM WIDTH	MAX LOAD @ 10 MPH	MAX PSI	TIRE WEIGHT
2.80-4	5190011	4	9.0	2.9	2.50	180	50	1.6
4.10-4	5190251	2	10.6	3.6	2.50	225	24	2.4
4.10-4	5190261	4	10.6	3.7	2.50	350	50	2.7
4.10/3.50-6	5190361	4	13.1	4.2	3.25	495	85	4.0
5.30/4.50-6	519067	6	14.6	5.3	3.50	885	95	5.6
4.80/4.00-8	5190501	2	16.0	4.6	3.75	510	35	4.8

All Outdoor Power Equipment are Non-Highway Service (NHS) Tires.

† Indicates mounted diameter and mounted width



RIDING MOWERS, GARDEN TRACTORS, SNOW THROWERS, TILLERS, ATV'S AND UTILITY VEHICLES

SUPER LUG, POWER TRAC AND TRU POWER

Super Lug, Power Trac and Tru Power tires are most often found on garden tractors, tillers and trenchers. This powerful line is the right choice whenever the application requires substantial traction.

TIRE	SIZE	PRODUCT CODE	PLY	DIAMETER†	WIDTH†	RIM WIDTH	MAX LOAD @ 12.5 MPH	MAX PSI	TIRE WEIGHT
Super Lug	13x5.00-6	5100201	2	13.1	4.5	3.50	290	20	5.0
Super Lug	14x4.50-6	5100251	2	14.5	4.4	3.25	320	20	4.0
Super Lug	16x6.50-8	5100961	4	16.5	6.3	5.38	615	28	9.0
Power Trac	4.80-8	5109501	2	16.2	4.1	2.50	440	20	6.0
Super Lug	18x9.50-8	5100811	4	18.3	8.6	7.00	1020	24	14.0
Super Lug	20x10.00-8	6L03301	4	20.1	10.0	7.00	1200	22	17.0
Tru Power	18x8.50-10	5233111	4	18.1	7.8	6.00	825	22	12.0
Tru Power	6.00-12	5233C3	4	22.8	5.5	4.00	585	28	13.0
Tru Power	23x8.50-12	523301	4	22.6	8.3	7.00	1100	22	17.0
Tru Power	23x10.50-12	523367	4	23.3	10.0	8.50	1390	20	26.0
Tru Power	26x12.00-12	523361	4	25.6	12.3	10.50	1760	20	33.0
Tru Power	26x12.00-12	523360	8	25.6	12.3	10.50	3000	42	39.0
Tru Power*	29x12.50-15	5233D4	6	29.8	11.9	10.00	1650	30	43.0
Tru Power*	31x15.50-15	5233A4	8	31.4	15.1	13.00	2760	45	74.0

All Outdoor Power Equipment are Non-Highway Service (NHS) Tires.

† Indicates mounted diameter and mounted width

*NOTE: Max load at 30 MPH



SUPER LUG

POWER TRAC

TRU POWER



HAND TRUCKS, WHEELBARROWS, TURF AND CHORE APPLICATIONS

FLAT FREE

Carlisle branded flat free full assemblies are made with solid micro-cellular polyurethane material to reduce flat returns. With its flat-free technology, no maintenance is required.

SIZE	PRODUCT CODE	TREAD	HUB	BEARINGS	DIAMETER††	WIDTH†	ASSEMBLY WEIGHT	WEIGHT CAPACITY	CASE QTY
Universal Wheelbarrow	483791	Ribbed	3" Centered with Spacers	5/8" & 3/4"	14.5	3.2	6.0	300	6
Universal Hand Truck	483811	Sawtooth	2.25" Offset with Spacers	5/8" & 3/4"	10.3	3.2	3.8	300	6
2.80/2.50-4	483871	Sawtooth	3" Centered	1/2" Precision	8.4	3.0	3.0	275	6
9x3.50-4	483831	Smooth	4" Centered	3/4" Bushing	9.3	3.2	3.9	300	6
4.10/3.50-4	483801	Sawtooth	2.25" Offset	5/8" Precision	10.4	3.4	4.0	300	6
11x4.00-5	483821	Smooth	5" Centered	5/8" Bushing	10.7	4.0	5.8	350	6
4.00-6	483771	Ribbed	3" Centered	5/8" Precision	13.2	3.2	5.1	300	6
13x5.00-6	483851	Turf	3" Centered	3/4" Bushing	13.3	4.5	8.1	400	3
13x6.50-6	483841	Turf	3" Centered	3/4" Bushing	13.5	6.2	11.5	400	3
15x6.50-6	483861	Turf	3" Centered	3/4" Bushing	14.0	6.3	12.1	500	3
4.80/4.00-8	483761	Ribbed	6" Centered	5/8" Precision	15.5	3.4	8.1	500	6
4.80/4.00-8	483781	Ribbed	3" Centered	3/4" Precision	15.5	3.4	8.0	500	6

All Outdoor Power Equipment are Non-Highway Service (NHS) Tires.

† Indicates mounted width

†† Indicates overall diameter



TOUR MAX

LINKS

FAIRWAY PRO

CLASSIC RB

GOLF CARS AND UTILITY VEHICLES

TOUR MAX®

The Tour Max tire is a smooth riding tire designed primarily for golf cars and closed community vehicles. The tread pattern, rubber compound and tire construction provide durability as well as ride comfort on hard surface paths.

SIZE	PRODUCT CODE	PLY	DIAMETER†	WIDTH†	RIM WIDTH	MAX LOAD @ 30 MPH	MAX PSI	TIRE WEIGHT
205/50-10	5191461	LR B	18.7	7.6	7.00	675	30	11.8

All Outdoor Power Equipment are Non-Highway Service (NHS) Tires. † Indicates mounted diameter and mounted width

LINKS®

The Links tire is a premier tire for the golf car market featuring a wide footprint, strong sidewall and wear-resistant rubber compound providing unmatched stability and durability.

SIZE	PRODUCT CODE	PLY	DIAMETER†	WIDTH†	RIM WIDTH	MAX LOAD @ 10 MPH	MAX PSI	TIRE WEIGHT
18x8.50-8	5192711	4	17.4	8.6	7.00	825	22	12.0

All Outdoor Power Equipment are Non-Highway Service (NHS) Tires. † Indicates mounted diameter and mounted width

FAIRWAY PRO

The Fairway Pro tire is an excellent value providing long hours of dependable performance on the course or park grass.

SIZE	PRODUCT CODE	PLY	DIAMETER†	WIDTH†	RIM WIDTH	MAX LOAD @ 10 MPH	MAX PSI	TIRE WEIGHT
18x8.50-8	5189761	4	18.2	8.4	7.00	825	22	12.0

All Outdoor Power Equipment are Non-Highway Service (NHS) Tires. † Indicates mounted diameter and mounted width

CLASSIC RB

Classic RB is a high load capacity tire with a broad footprint for maximum turf protection.

SIZE	PRODUCT CODE	PLY	DIAMETER†	WIDTH†	RIM WIDTH	MAX LOAD @ 10 MPH	MAX PSI	TIRE WEIGHT
18x9.50-8	5832D8	10	17.6	8.7	7.00	1780	60	13.0

All Outdoor Power Equipment are Non-Highway Service (NHS) Tires. † Indicates mounted diameter and mounted width

TURF GLIDE

One of the original golf car tires, the Turf Glide tire has a tall sidewall to absorb impact and a turf-friendly round contour profile.

SIZE	PRODUCT CODE	PLY	DIAMETER†	WIDTH†	RIM WIDTH	MAX LOAD @ 10 MPH	MAX PSI	TIRE WEIGHT
8.00-6*	508040	4	17.6	7.1	3.25	410	20	8.0

All Outdoor Power Equipment are Non-Highway Service (NHS) Tires. † Indicates mounted diameter and mounted width *Tube Type Tire



HARD SURFACE UTILITY VEHICLE

INDUSTRIAL TRAX

The Industrial Trax tire is designed for hard surface utility vehicle applications such as concession vehicles on golf courses.

SIZE	PRODUCT CODE	PLY	DIAMETER†	WIDTH†	RIM WIDTH	MAX LOAD @ 10 MPH	MAX PSI	TIRE WEIGHT
20x10.00-10	599581	4	20.0	10.0	8.00	1170	22	13.7
23x10.50-12	599045	4	22.5	10.4	8.50	1340	20	21.8
25x10.50-12	560446	6	25.0	10.5	7.00	1980	30	29.2

All Outdoor Power Equipment are Non-Highway Service (NHS) Tires.

† Indicates mounted diameter and mounted width



SNOW HOG

With its distinctive “X” shaped tread elements, the Snow Hog tire has an aggressive design made to plow through soft terrain. Used primarily for snow-blowers.

SIZE	PRODUCT CODE	PLY	DIAMETER†	WIDTH†	RIM WIDTH	MAX LOAD @ 12.5 MPH	MAX PSI	TIRE WEIGHT
4.10-6	5170051	2	12.8	4.0	3.25	290	24	3.2
15x5.00-6	5170081	2	14.8	5.0	3.50	405	20	4.8
4.80-8	5170011	2	16.2	4.7	3.75	440	20	5.5
16x6.50-8	5170021	2	16.4	6.2	5.38	410	14	6.2
18x6.50-8	5170101	4	17.2	6.6	5.38	760	28	7.6

All Outdoor Power Equipment are Non-Highway Service (NHS) Tires.

† Indicates mounted diameter and mounted width



RIDING MOWERS, GARDEN TRACTORS, SNOW THROWERS, TILLERS, ATV’S AND UTILITY VEHICLES

XTRAC®

The XTRAC tire is excellent for snow throwing equipment and other applications requiring aggressive traction. It features a unique lug design for traction across the entire face of the tire.

SIZE	PRODUCT CODE	PLY	DIAMETER†	WIDTH†	RIM WIDTH	MAX LOAD @ 10 MPH	MAX PSI	TIRE WEIGHT
13x4.00-6	5170151	2	12.8	4.0	3.25	280	22	3.5
15x5.00-6	5170171	2	14.6	5.1	3.50	395	20	5.3
4.80-8	5170111	2	16.6	4.7	3.75	440	20	5.8
16x6.50-8	5170181	2	16.4	6.0	5.38	410	14	7.0

All Outdoor Power Equipment are Non-Highway Service (NHS) Tires.
† Indicates mounted diameter and mounted width

All Purpose



AT489 22



AT489 II 23



489 XD® 23



TRAIL WOLF® 24



DURA TRAIL™ 24



A-C-T 25



A-C-T HD 25



STRYKER® 26



WORK MATE® 26



PXT2 26

Mud



BLACK ROCK® 27





Sport / Performance

**VERSA TRAIL® ATR** 28**VERSA TRAIL® XTR** 28**VERSA TRAIL® XD** 28

Hard Packed Turf

**TURF TAMER** 27**ALL TRAIL®** 29**ALL TRAIL® II** 29**HD FIELD TRAX** 30**KNOBBY** 30



UTILITY VEHICLES, SIDE BY SIDE VEHICLES

AT489

The AT489 tire is a popular original equipment replacement tire and strikes a great balance between lightweight and puncture resistance. It has outstanding grip on loose terrain without giving up the comfortable ride on hard-packed surfaces, soft surfaces and mud.

SIZE	PRODUCT CODE	STAR/PLY	DIAMETER†	WIDTH†	RIM WIDTH	MAX LOAD @ 50 MPH	MAX PSI	TIRE WEIGHT	TREAD DEPTH (32nds)
22x9.50-10	5793N1	4 PR	22.0	9.5	7.00	600	14	16.0	19
22x11.00-10	5893H5	4 PR	22.8	10.2	9.00	600	12	17.0	19
AT23x7.00-10	5893M0	2*	23.0	7.0	5.50	240	5	12.0	19
AT23x8.00-11	589304	3*	23.5	7.5	6.50	290	7	15.0	19
24x12.00-10	5793A6	4 PR	24.0	12.0	9.50	1050	20	24.0	19
24x9.50-10	5793P2	4 PR	24.2	9.6	7.80	855	22	18.0	19
AT24X11.00-10	589305	3*	24.0	10.0	9.00	440	7	18.0	19
AT24x9.00-11	5893A9	3*	24.0	8.9	7.00	365	7	18.0	19
AT24x10.00-11	589328	3*	24.6	9.6	8.00	395	7	19.0	19
24x8.00-12	6P0819	4 PR	24.0	7.5	6.50	505	12	15.0	19
24x9.00-12	6P0818	4 PR	24.3	8.5	7.00	565	12	17.0	19
AT24x11.00-12	589344	3*	24.0	10.9	9.00	430	7	21.0	19
AT25x11.00-10	589308	3*	25.7	10.5	9.00	455	7	21.0	19
25x8.00-12	589306	4 PR	25.1	7.5	6.50	495	10	15.0	19
25x10.00-12	589335	4 PR	25.3	9.0	8.00	600	10	18.0	19
25x11.00-12	589351	4 PR	25.4	10.5	9.00	1050	22	21.0	19

NHS tires are Non-Highway Service Tires. "AT" tires are designed for ATV applications. "NHS" tires are designed for Utility Vehicle applications.

† Indicates mounted diameter and mounted width

*NOTE: "AT" tires are Star Rated. "NHS" tires are Ply Rated (PR).



AT 489 II

489 XD

AT489 II

The AT489 II tire is the next generation of the original AT489. It features dependable performance for a wide range of terrain conditions like soft to intermediate surfaces. Made in the USA.



SIZE	PRODUCT CODE	STAR/PLY	DIAMETER†	WIDTH†	RIM WIDTH	MAX LOAD @ 50 MPH	MAX PSI	TIRE WEIGHT	TREAD DEPTH (32nds)
AT26X8.00-14	560565	3*	26.0	7.8	6.00	355	7	17.0	20
AT26X10.00-14	560568	3*	26.3	9.8	8.00	430	7	22.0	20
27X9.00-12 NHS	6P0371	6 PR	27.2	9.0	7.00	1230	32	21.0	20
27X11.00-12 NHS	6P0372	6 PR	27.4	11.4	9.00	1520	34	30.0	20

NHS tires are Non-Highway Service Tires. "AT" tires are designed for ATV applications. "NHS" tires are designed for Utility Vehicle applications.

† Indicates mounted diameter and mounted width

*NOTE: "AT" tires are Star Rated. "NHS" tires are Ply Rated (PR).

489 XD

The 489 XD tire is designed for today's UTV. With a bias construction and v-shape lug, this tire helps maintain a smooth ride in various terrains. The 489 XD is ideal for demanding applications.



SIZE	PRODUCT CODE	STAR/PLY	DIAMETER†	WIDTH†	RIM WIDTH	MAX LOAD @ 68 MPH	MAX PSI	TIRE WEIGHT	TREAD DEPTH (32nds)
25x8.00-12	6P1710	8 PR	25.1	7.5	6.50	695	20	20.0	24
25X11.00-12	6P1711	8 PR	25.8	10.5	8.00	520	20	27.0	24
26x8.00-12	6P1712	8 PR	26.2	8.2	7.00	565	20	21.0	24
26x9.00-12	6P1713	8 PR	26.2	9.4	7.00	615	20	22.0	24
26x11.00-12	6P1714	8 PR	25.6	10.8	8.00	715	20	28.0	24
27x9.00-12	6P1715	8 PR	27.3	9.1	8.00	660	20	23.0	24
27x11.00-12	6P1716	8 PR	27.4	10.9	8.00	760	20	29.0	24

NHS tires are Non-Highway Service Tires. "AT" tires are designed for ATV applications. "NHS" tires are designed for Utility Vehicle applications.

† Indicates mounted diameter and mounted width

*NOTE: "AT" tires are Star Rated. "NHS" tires are Ply Rated (PR).



TRAIL WOLF

DURA TRAIL

UTILITY VEHICLES, SIDE BY SIDE VEHICLES

TRAIL WOLF®

The Trail Wolf tire features a deep, wrap around tread that promotes forward traction while minimizing lateral slip. Trail Wolf is made with stiff sidewalls that increase cornering control and a compound formulated for extended wear.



SIZE	PRODUCT CODE	STAR/PLY	DIAMETER†	WIDTH†	RIM WIDTH	MAX LOAD @ 50 MPH	MAX PSI	TIRE WEIGHT	TREAD DEPTH (32nds)
AT19x7.00-8	5370386	1*	19.0	6.8	5.50	143	4	9.0	9
AT19x8.00-8	5370346	1*	19.0	7.1	6.00	161	4	10.0	8
AT20x11.00-9	5370341	3*	20.2	10.5	9.00	340	7	13.0	16
AT22x10.00-9	5370556	3*	21.7	10.7	9.00	355	7	16.0	16
25x12.00-9	5370826	4 PR	25.9	11.8	9.00	585	10	24.0	20
20x11.00-10	5100156	4 PR	20.3	10.6	9.00	880	22	14.0	14
21x7.00-10	5370846	4 PR	21.4	6.7	5.50	265	10	13.0	14
AT22x7.00-10	5370486	4 PR	22.2	6.7	5.50	220	7	13.0	16
22x10.00-10	5370496	4 PR	23.4	9.1	8.00	410	10	18.0	16
AT22x7.00-11	5370546	4 PR	21.8	7.3	6.50	245	7	13.0	16
25x8.00-12	5EE1001	4 PR	25.2	7.5	6.00	385	22	17.0	19
25x10.00-12	5EE1011	4 PR	25.9	9.3	8.00	465	22	20.0	19

NHS tires are Non-Highway Service Tires. "AT" tires are designed for ATV applications. "NHS" tires are designed for Utility Vehicle applications.

† Indicates mounted diameter and mounted width *NOTE: "AT" tires are STAR Rated. "NHS" tires are Ply Rated. (PR).

DURA TRAIL®

The Dura Trail is an all purpose tire ideal for hard pack, desert, rocks/ruts. and intermediate terrains. It's wrap around lugs provide improved shoulder protection and the super deep rim guard feature offers wheel lip protection making it ideal for the modern ride.



SIZE	PRODUCT CODE	STAR/PLY	DIAMETER†	WIDTH†	RIM WIDTH	MAX LOAD @ 81 MPH	MAX PSI	TIRE WEIGHT	TREAD DEPTH (32nds)
25x8.00R12	6P1665	8 PR	25.3	8.3	7.00	355	20	26.0	24
25x10.00R12	6P1666	8 PR	25.6	10.3	8.00	430	20	31.0	24
26x9.00R12	6P1667	8 PR	26.6	9.2	7.00	430	20	27.0	24
26x11.00R12	6P1668	8 PR	27.3	10.4	8.00	505	20	34.0	24
27x9.00R14	6P1669	8 PR	27.0	9.1	7.00	440	20	26.0	20
27x11.00R14	6P1670	8 PR	27.6	11.0	9.00	520	20	33.0	20

NHS tires are Non-Highway Service Tires. "AT" tires are designed for ATV applications. "NHS" tires are designed for Utility Vehicle applications.

† Indicates mounted diameter and mounted width



A-C-T

A-C-T HD

UTILITY VEHICLES, SIDE BY SIDE VEHICLES

A-C-T

The A-C-T tire features advanced radial construction to absorb trail hazards and ride disturbances. The radial design increases both traction and ride quality. The A-C-T tire has an aggressive open lug tread pattern with a $\frac{3}{4}$ inch tread depth. Made in the USA.



SIZE	PRODUCT CODE	STAR/PLY	DIAMETER†	WIDTH†	RIM WIDTH	MAX LOAD @ 50 MPH	MAX PSI	TIRE WEIGHT	TREAD DEPTH (32nds)
AT25X8.00R12	560425	3*	25.0	7.8	6.50	340	7	17.0	24
AT25X11.00R12	560426	3*	25.7	10.6	9.00	455	7	23.0	24
26X8.00R12 NHS	560441	4 PR	26.3	7.9	6.50	550	10	18.0	24
26X10.00R12 NHS	560442	4 PR	26.6	10.4	8.00	640	10	24.0	24

NHS tires are Non-Highway Service Tires. "AT" tires are designed for ATV applications. "NHS" tires are designed for Utility Vehicle applications.

† Indicates mounted diameter and mounted width *NOTE: "AT" tires are Star Rated. "NHS" tires are Ply Rated (PR).

A-C-T HD

The A-C-T HD tire is a 6 ply rated radial tire with higher pressure, load capacities and larger sizes than the original A-C-T tire. This tire features increased carcass strength for less sidewall flex and self-cleaning tread design. Made in the USA.



SIZE	PRODUCT CODE	STAR/PLY	DIAMETER†	WIDTH†	RIM WIDTH	MAX LOAD @ 50 MPH	MAX PSI	TIRE WEIGHT	TREAD DEPTH (32nds)
25X8.00R12	560481	6 PR	25.9	7.7	6.50	695	18	22.0	33
25x11.00R12	560482	6 PR	25.8	10.5	9.00	935	18	27.0	33
26x9.00R12 NHS	560465	6 PR	26.7	8.6	7.00	825	18	26.0	32
26x11.00R12 NHS	560466	6 PR	27.2	10.0	9.00	965	18	30.0	32
27x9.00R12 NHS	560472	6 PR	27.5	8.9	7.00	880	18	26.0	32
27x11.00R12 NHS	560473	6 PR	27.5	10.6	9.00	1020	18	32.0	32

NHS tires are Non-Highway Service Tires. "AT" tires are designed for ATV applications. "NHS" tires are designed for Utility Vehicle applications.

† Indicates mounted diameter and mounted width



STRYKER

WORK MATE

PXT2

ATVS, UTILITY VEHICLES, SIDE BY SIDE VEHICLES

STRYKER®

The Stryker tire features a unique offset chevron pattern that is self-cleaning with great performance in all terrains. Made in the USA.



SIZE	PRODUCT CODE	STAR/PLY	DIAMETER†	WIDTH†	RIM WIDTH	MAX LOAD @ 50 MPH	MAX PSI	TIRE WEIGHT	TREAD DEPTH (32nds)
AT22X11.00-8	531073	2*	22.8	11.1	9.00	340	5	21.2	19
22x9.00-10 NHS	516091	4 PR	22.8	9.4	6.00	675	20	19.9	20
AT22X11.00-10	531095	2*	22.9	10.1	8.00	330	5	19.2	19

NHS tires are Non-Highway Service Tires. "AT" tires are designed for ATV applications. "NHS" tires are designed for Utility Vehicle applications.

† Indicates mounted diameter and mounted width

*NOTE: "AT" tires are STAR Rated. "NHS" tires are Ply Rated. (PR).

WORK MATE®

The Work Mate offers the perfect balance of traction, stability, and control for your utilitarian UTV needs. The tough 8 ply rating provides the puncture and impact resistance needed in demanding applications.



SIZE	PRODUCT CODE	STAR/PLY	DIAMETER†	WIDTH†	RIM WIDTH	MAX LOAD @ 62 MPH	MAX PSI	TIRE WEIGHT	TREAD DEPTH (32nds)
23x11.00-10	6P16361	8 PR	23.3	10.7	8.00	785	24	26.0	18 /32

NHS tires are Non-Highway Service Tires. "AT" tires are designed for ATV applications. "NHS" tires are designed for Utility Vehicle applications.

† Indicates mounted diameter and mounted width

*NOTE: "AT" tires are STAR Rated. "NHS" tires are Ply Rated. (PR).

PXT2

Designed for heavy payload applications, the PXT2 is a non-directional tire with specific front and rear sizing configurations.



SIZE	PRODUCT CODE	STAR/PLY	DIAMETER†	WIDTH†	RIM WIDTH	MAX LOAD @ 50 MPH	MAX PSI	TIRE WEIGHT	TREAD DEPTH (32nds)
26x9.00-12 NHS	6P05861	6 PR	26.0	8.4	6.50	930	22	24.0	20
26x11.00-12 NHS	6P05871	6 PR	26.1	10.3	8.00	1165	24	27.0	20

NHS tires are Non-Highway Service † Indicates mounted diameter and mounted width



BLACK ROCK

TURF TAMER

BLACK ROCK®

Designed to balance ride quality with an aggressive $\frac{3}{4}$ inch tread depth, the Black Rock tire is built to handle any trail conditions while also providing a smooth ride. Made in the USA.



SIZE	PRODUCT CODE	STAR/PLY	DIAMETER†	WIDTH†	RIM WIDTH	MAX LOAD @ 50 MPH	MAX PSI	TIRE WEIGHT	TREAD DEPTH (32nds)
AT25x8.00-12	560538	3*	25.3	8.0	6.50	340	7	22.6	23
AT25x10.00-12	560540	3*	25.3	9.6	8.00	420	7	22.2	24
AT26x9.00-12	560539	3*	26.4	9.0	7.00	410	7	19.8	23
AT26x11.00-12	560541	3*	26.2	10.4	9.00	480	7	23.6	24

NHS tires are Non-Highway Service Tires. "AT" tires are designed for ATV applications. "NHS" tires are designed for Utility Vehicle applications.

† Indicates mounted diameter and mounted width

*NOTE: "AT" tires are Star Rated. "NHS" tires are Ply Rated (PR).

TURF TAMER

With its lightweight construction, stiff sidewalls and hollowed-out lugs, the Turf Tamer tire provides excellent handling in hard-packed conditions. Formulated for performance, the Turf Tamer tire's wide profile ensures stability around tight corners and traction for a variety of terrains. Made in the USA.



SIZE	PRODUCT CODE	STAR/PLY	DIAMETER†	WIDTH†	RIM WIDTH	MAX LOAD @ 50 MPH	MAX PSI	TIRE WEIGHT	TREAD DEPTH (32nds)
AT22.5X10.00-8	55U3B9	3*	22.3	9.6	8.00	365	7	12.9	16
22.5X10.00-8 NHS	55U3C7	4 PR	23.0	9.2	8.00	825	22	13.2	16
AT25X12.00-9	55U373	3*	25.1	11.0	10.00	495	7	16.7	16

NHS tires are Non-Highway Service Tires. "AT" tires are designed for ATV applications. "NHS" tires are designed for Utility Vehicle applications. † Indicates mounted diameter and mounted width

*NOTE: "AT" tires are STAR Rated. "NHS" tires are Ply Rated. (PR).



VERSA TRAIL ATR

VERSA TRAIL XTR

VERSA TRAIL XD

ATVS, UTILITY VEHICLES, SIDE BY SIDE VEHICLES

VERSA TRAIL® ATR

The Versa Trail tire is an all-purpose, radial tire that increases terrain versatility and optimizes traction without compromising comfort and handling. Its "Tough-Tread" rubber compound and durable 6-ply rated construction protects against cuts, chips and tread wear to ensure unequalled puncture resistance.



SERIES	SIZE	PRODUCT CODE	STAR/PLY	DIAMETER†	WIDTH†	RIM WIDTH	MAX LOAD @ 87 MPH	MAX PSI	TIRE WEIGHT	TREAD DEPTH (32nds)
Versa Trail ATR	25X8.00R12 NHS	6P1270	6 PR	24.9	8.2	6.50	1020	34	22.7	23
Versa Trail ATR	25X10.00R12 NHS	6P1271	6 PR	25.2	9.9	8.00	1200	32	25.9	23
Versa Trail ATR	26X9.00R12 NHS	6P1272	6 PR	26.4	9.1	7.00	1170	32	25.3	23
Versa Trail ATR	26X11R.00R12 NHS	6P1273	6 PR	26.7	10.8	9.00	1430	34	29.2	23
Versa Trail ATR	27x9.00R12 NHS	6P02681	6 PR	27.0	9.1	7.00	1230	32	25.8	23
Versa Trail ATR	27x11.00R12 NHS	6P02691	6 PR	27.5	11.0	9.00	1520	34	30.6	23
Versa Trail ATR	27X9.00R14 NHS	6P1274	6 PR	27.0	9.0	7.00	1200	32	26.6	23
Versa Trail ATR	27X11.00R14 NHS	6P1275	6 PR	27.5	11.1	8.00	1480	34	31.0	23
Versa Trail ATR	28X10.00R14 NHS	6P0276	6 PR	28.4	10.1	8.00	1390	32	30.2	23
Versa Trail XTR	30x10.00R14	6P0871	8 PR	29.47	10.0	8.00	1570	32	43.0	23
Versa Trail XTR	32x10.00R14	6P0872	8 PR	32.6	10.3	7.00	855	32	48.0	23
Versa Trail XD	26x10.00R12	6P1796	8 PR	26.3	10.0	8.00	430	26	30.5	24

NHS tires are Non-Highway Service Tires. "AT" tires are designed for ATV applications. "NHS" tires are designed for Utility Vehicle applications.

† Indicates mounted diameter and mounted width



ALL TRAIL

ALL TRAIL II



ATVS, UTILITY VEHICLES, SIDE BY SIDE VEHICLES

ALL TRAIL®

The All Trail and All Trail II tire lines are specifically designed for use on hard surface conditions. The low, wide profile reduces soft wallowing chassis roll commonly experienced with other tires while its uniquely tight tread pattern offers a smooth ride experience. The specially formulated compound delivers durable extended tire life with responsive, predictable and level handling on pavement, concrete and hard-packed soil.

SIZE	PRODUCT CODE	STAR/PLY	DIAMETER†	WIDTH†	RIM WIDTH	MAX LOAD @ 50 MPH	MAX PSI	TIRE WEIGHT	TREAD DEPTH (32nds)
22x11.00-10	510016	4 PR	21.9	10.1	8.00	880	22	20.0	16
23x8.00-12	511506	4 PR	23.7	8.4	6.50	675	22	20.0	19
23x10.50-12	511505	4 PR	23.1	10.1	8.50	825	20	23.0	20
25x8.00-12	511507	4 PR	24.8	8.4	7.00	785	22	19.0	19
25x9.00-12	5E0587	6 PR	25.4	8.5	6.00	1100	32	20.0	16
25x10.00-12	6P0334	4 PR	24.9	10.5	8.00	965	22	25.0	19
25x10.50-12	511508	4 PR	24.8	10.1	7.00	935	20	25.0	20
27X9.00-14	6P0671	4 PR	27.85	8.92	7.00	910	20	24.0	16
27X11.00-14	6P0672	4 PR	28.1	11	9.00	1170	22	30.0	16

NHS tires are Non-Highway Service Tires. "AT" tires are designed for ATV applications. "NHS" tires are designed for Utility Vehicle applications.

† Indicates mounted diameter and mounted width

ALL TRAIL® II

SIZE	PRODUCT CODE	STAR/PLY	DIAMETER†	WIDTH†	RIM WIDTH	MAX LOAD @ 50 MPH	MAX PSI	TIRE WEIGHT	TREAD DEPTH (32nds)
20x10.00-8	510043	4 PR	19.8	9.4	8.00	715	22	17.0	14
22x10.00-8	510044	4 PR	22.0	10.2	7.00	825	22	16.0	14
20x10.00-10	510045	4 PR	20.3	8.2	6.00	695	22	15.0	14
22x9.50-10	55A3N1	4 PR	22.0	9.6	8.00	585	14	16.0	14
23x11.00-10	6P0058	6 PR	23.5	10.9	9.00	1230	34	20.0	17
24x9.50-10	55A3P2	4 PR	24.0	9.5	7.50	870	22	17.0	14
24x10.50-10	55A3N9	4 PR	24.3	10.8	8.00	900	20	20.0	14
25x9.00-12	560443	4 PR	25.2	8.60	7.0	825	20	18.6	16
25x11.00-12	560444	4 PR	25.5	10.8	9.00	1050	22	21.0	16
25x11.00-12	6P0333	6 PR	25.5	11.2	9.00	1360	34	24.0	16

NHS tires are Non-Highway Service Tires. "AT" tires are designed for ATV applications. "NHS" tires are designed for Utility Vehicle applications.

† Indicates mounted diameter and mounted width



HD FIELD TRAX

KNOBBY

ATVS, UTILITY VEHICLES, SIDE BY SIDE VEHICLES

HD FIELD TRAX

The HD Field Trax tire features a wide profile providing stability on hard-packed surfaces. With its non-directional tread pattern and long-lasting construction, the HD Field Trax tire delivers a smooth and comfortable ride while resisting cut, chips and abrasions.



SIZE	PRODUCT CODE	STAR/PLY	DIAMETER†	WIDTH†	RIM WIDTH	MAX LOAD @ 50 MPH	MAX PSI	TIRE WEIGHT	TREAD DEPTH (32nds)
18X8.50-10 NHS	5883U1	4 PR	18.0	7.8	7.00	495	22	11.0	12
AT22X12.00-8	588389	3*	21.5	11.3	9.50	430	7	20.0	20
AT22.5X10.00-8	5883B9	3*	22.7	10.0	8.00	365	7	21.0	20
24X12.00-12 NHS	560366	2 PR	23.3	11.2	9.50	675	10	24.0	20
AT25X13.00-9	588394	3*	24.8	12.4	10.00	535	7	27.0	20
26X12.00-12 NHS	560467	2 PR	25.4	12.2	9.50	760	10	25.0	20

NHS tires are Non-Highway Service Tires. "AT" tires are designed for ATV applications. "NHS" tires are designed for Utility Vehicle applications.

† Indicates mounted diameter and mounted width

*NOTE: "AT" tires are Star Rated. "NHS" tires are Ply Rated (PR).

KNOBBY

The Knobby tire offers a unique design available in solid or dimple tread pattern. The Knobby tire delivers maximum performance on a variety of terrains and is ideal for ATVs and golf cars.



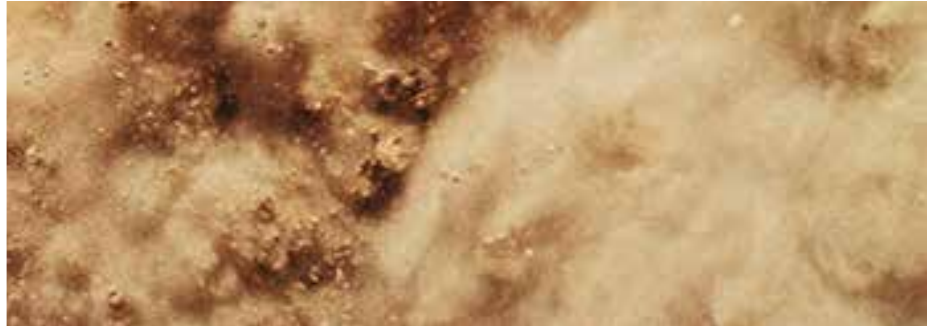
SIZE	PRODUCT CODE	STAR/PLY	DIAMETER†	WIDTH†	RIM WIDTH	MAX LOAD @ 50 MPH	MAX PSI	TIRE WEIGHT	TREAD DEPTH (32nds)
AT145/70-6	5150021	1*	14.3	5.3	4.50	99	4	5.0	6
AT16X8.00-7	5150031	3*	16.5	6.6	5.00	180	7	7.0	12
18X9.50-8 NHS	537005	2 PR	18.3	8.8	7.00	365	10	10.0	12
AT22X11.00-8**	537050	3*	22.3	10.5	9.00	395	7	14.0	15
AT25X12.00-9**	537081	2*	24.6	11.8	10.00	430	5	18.0	15

NHS tires are Non-Highway Service Tires. "AT" tires are designed for ATV applications. "NHS" tires are designed for Utility Vehicle applications.

† Indicates mounted diameter and mounted width

*NOTE: "AT" tires are Star Rated. "NHS" tires are Ply Rated (PR).

**NOTE: The AT22x11-8 and AT25x12-9 sizes have a Knobby tread, and not the dimpled Knobby tread pattern shown above.

[illegible]

Trailer

ALL PURPOSE



RADIAL TRAIL® HD 34



ULTRA SPORT RH 34



SPORT TRAIL® 35



SPORT TRAIL® LH 35



USA TRAIL 36



CSL 16 ALL STEEL 36



SURE TRAIL 36



EXTRA GRIP 36







RADIAL TRAIL HD

ULTRA SPORT RH

BOAT, CARGO, HORSE AND LIVESTOCK, RV, TOWABLE UTILITY, AND SPECIALTY TRAILERS

RADIAL TRAIL® HD

The Radial Trail HD tire is designed with a unique tread pattern that wears evenly over time. As the superior trailer tire in the industry, the Radial Trail HD tire is constructed with heat resistant technology and compliant with DOT standards.

SIZE	PRODUCT CODE	LOAD RANGE	DIAMETER†	WIDTH†	RIM WIDTH	MAX CAPACITY	TIRE PSI*	TREAD DEPTH (32nds)	SPEED RATING
ST145/R12**	5151311	LRD	21.4	5.9	4.00	1220	65	9	75
ST145/R12**	5151321	LRE	21.4	6.0	4.00	1520	80	9	75
ST175/80R13	6H04511	LRC	24.1	7.0	5.00	1360	50	8	81
ST175/80R13	6H04521	LRD	24.1	7.0	5.00	1570	65	8	81
ST185/80R13	6H04531	LRC	24.7	7.2	5.00	1480	50	8	81
ST185/80R13	6H04541	LRD	24.7	7.2	5.00	1710	65	8	81
ST205/75R14	6H04551	LRC	26.1	7.8	5.50	1760	50	9	81
ST205/75R14	6H04561	LRD	26.1	7.8	5.50	2040	65	9	81
ST215/75R14	6H04571	LRC	26.7	8.3	6.00	1870	50	9	81
ST205/75R15	6H04581	LRC	27.1	7.8	5.50	1820	50	9	81
ST205/75R15	6H04591	LRD	27.1	7.8	5.50	2150	65	9	81
ST225/75R15	6H04611	LRD	28.3	8.6	6.00	2540	65	9	81
ST225/75R15	6H04621	LRE	28.1	8.8	6.00	2830	80	9	75
ST235/80R16	6H04631	LRE	30.8	9.0	6.50	3520	80	10	75
ST235/85R16	6H04641	LRE	31.7	9.3	6.50	3640	80	12	75
ST235/85R16	6H04651	LRF	31.7	9.3	6.50	3960	95	12	75

† Indicates mounted diameter and mounted width

*NOTE: Tire PSI shown is the Recommended PSI

**NOTE: Sizes with asterisks have the Radial Trail RH tread pattern.

ULTRA SPORT RH

The Ultra Sport RH tire offers a low profile design with a high performance look. Its tire profile and tread formulation creates a lower rolling resistance ensuring stability on the road. Compliant with DOT standards.

SIZE	PRODUCT CODE	LOAD RANGE	DIAMETER†	WIDTH†	RIM WIDTH	MAX CAPACITY	TIRE PSI*	TREAD DEPTH (32nds)	SPEED RATING
ST235/60R15	6H00901	LRF	28.3	8.7	6.00	3080	95	45	11

*NOTE: Tire PSI shown is the Recommended PSI † Indicates mounted diameter and mounted width



SPORT TRAIL (WIDE)

SPORT TRAIL (NARROW)

SPORT TRAIL LH

BOAT, CARGO, HORSE AND LIVESTOCK, RV, TOWABLE UTILITY, AND SPECIALTY TRAILERS

SPORT TRAIL®

Sport Trail tire features a radial look with bias construction. The tread profile and formulation creates lower rolling resistance. Often used for towable utility and boat trailers, the Sport Trail tire is long-lasting for a safe travel.

SIZE	PRODUCT CODE	LOAD RANGE	DIAMETER†	WIDTH†	RIM WIDTH	MAX CAPACITY	TIRE PSI*	TREAD DEPTH (32nds)	SPEED RATING
4.80-8**	5193171	LRB	16.3	4.7	3.75	585	60	8	62
4.80-8**	5193181	LRC	16.3	4.9	3.75	760	90	8	62
5.70-8**	5193191	LRB	18.1	5.9	3.75	715	50	10	62
5.70-8**	5193201	LRC	18.4	6.0	3.75	910	75	10	62
5.70-8**	5100591	LRD	18.7	6.0	3.75	1070	100	10	62
16.5x6.5-8	5193481	LRD	16.6	6.8	5.38	910	90	7	62
18.5x8.5-8	5193431	LRB	18.0	8.6	7.00	760	35	10	62
18.5x8.5-8	5193451	LRC	17.9	8.6	7.00	935	50	10	75
20.5x8.0-10	5193471	LRC	20.9	8.0	6.00	1100	50	10	62
20.5x8.0-10	5193501	LRE	20.6	8.2	6.00	1520	90	10	81
20.5x8.0-10	5193511	LRF	20.8	8.4	6.00	1650	105	10	62

† Indicates mounted diameter and mounted width *NOTE: Tire PSI shown is the Recommended PSI **Sport Trail Narrow tread pattern

SPORT TRAIL® LH

Sport Trail LH tire brings an optimized tread pattern for larger bias trailer tires (>12" rim diameter). The tread and contour were designed to increase endurance, reduce heat build-up and maintain even wear for extended tread life.

SIZE	PRODUCT CODE	LOAD RANGE	DIAMETER†	WIDTH†	RIM WIDTH	MAX CAPACITY	TIRE PSI*	TREAD DEPTH (32nds)	SPEED RATING
4.80-12	6H01291	LRB	20.6	5.0	4.00	785	60	6	87
4.80-12	6H01301	LRC	20.6	5.0	4.00	990	90	6	87
5.30-12	6H01391	LRB	21.6	5.3	4.00	855	55	6	87
5.30-12	6H01381	LRC	21.6	5.3	4.00	1050	80	6	87
ST175/80D13	6H01361	LRC	24.0	6.9	4.50	1360	50	8	87
ST185/80D13	6H01371	LRC	24.4	7.1	4.50	1480	50	8	87
ST185/80D13	6H02231	LRD	24	7.2	5.00	1710	65	8	87
ST205/75D14	6H01351	LRC	25.8	7.9	5.50	1760	50	8	87
ST215/75D14	6H01421	LRC	26.7	8.4	6.00	1870	50	8	81
ST205/85D14.5	6H01451	LRF	27.8	8	6.00	2830	95	9	87
ST205/75D15	6H01231	LRC	27.13	8.0	5.50	1820	50	8	87
ST205/90D15	6H01441	LRD	29.4	8.0	5.50	2600	65	12	87
ST225/75D15	6H01411	LRD	28.3	8.6	6.00	2540	65	9	87
ST225/90D16	6H01431	LRE	31.6	9	6.00	3520	80	12	87

† Indicates mounted diameter and mounted width *NOTE: Tire PSI shown is the Recommended PSI



CSL 16

USA TRAIL

EXTRA GRIP

BOAT, CARGO, HORSE AND LIVESTOCK, RV, TOWABLE UTILITY, AND SPECIALTY TRAILERS

CSL 16 ALL STEEL

The CSL 16 tire offers heavy duty hauling capabilities for large equipment and extremely heavy loads. Its all-steel body is essential for a load rating of up to 4,400 pounds of towing capacity. Its robust construction combined with an industrial highway tread design leads to extended service life on the highway and protects against environmental elements.

SIZE	PRODUCT CODE	LOAD RANGE	DIAMETER†	WIDTH†	RIM WIDTH	MAX CAPACITY	TIRE PSI*	TREAD DEPTH (32nds)	SPEED RATING
ST225/75R15	6H09881	LRF	28.3	8.7	6.00	3080	95	11	81
ST235/80R16	6H08101	LRG	30.6	9.0	6.50	4080	110	10	81
ST235/85R16	6H08111	LRG	30.9	9.5	6.50	4400	110	11	81

† Indicates mounted diameter and mounted width *NOTE: Tire PSI shown is the Recommended PSI

USA TRAIL®

The USA Trail tire is built for long-lasting wear with its bias-ply construction. With rugged grooves to channel water in wet conditions, the USA Trail tire is compliant with DOT standards and made in the USA.

SIZE	PRODUCT CODE	LOAD RANGE	DIAMETER†	WIDTH†	RIM WIDTH	MAX CAPACITY	TIRE PSI*	TREAD DEPTH (32nds)	SPEED RATING
6.90-9	519572	LRC	22.0	7.1	4.50	1100	60	10	62

† Indicates mounted diameter and mounted width *NOTE: Tire PSI shown is the Recommended PSI

SURE TRAIL

Long-lasting wear with its bias-ply construction. With rugged grooves to channel water in wet conditions, the Sure Trail tire is Made in the USA.

SIZE	PRODUCT CODE	LOAD RANGE	DIAMETER†	WIDTH†	RIM WIDTH	MAX CAPACITY	TIRE PSI*	TREAD DEPTH (32nds)	SPEED RATING
ST195/75D14	519307	LRD	24.6	7.2	5.50	1870	65	10	62

† Indicates mounted diameter and mounted width *NOTE: Tire PSI shown is the Recommended PSI

EXTRA GRIP

Long-lasting wear with its bias-ply construction. With rugged grooves to channel water in wet conditions, the Extra Grip tire is Made in the USA.

SIZE	PRODUCT CODE	LOAD RANGE	DIAMETER†	WIDTH†	RIM WIDTH	MAX CAPACITY	TIRE PSI*	TREAD DEPTH (32nds)	SPEED RATING
5.70-8	519886	LRB	18.6	5.8	3.75	715	50	10	62

† Indicates mounted diameter and mounted width *NOTE: Tire PSI shown is the Recommended PSI



This image shows a single sheet of white paper with horizontal ruling lines. The lines are evenly spaced and run across the width of the page. There are no margins, text, or other markings on the paper.

Agriculture and Construction

FRONT TRACTOR STEERING



FARM SPECIALIST® F-2 40



FARM SPECIALIST® F-2M 40



FARM SPECIALIST® F-3 INDUSTRIAL FRONT 40

IMPLEMENT



FARM SPECIALIST® F-3 RADIAL IMPLEMENT 41



FARM SPECIALIST® F-1 41



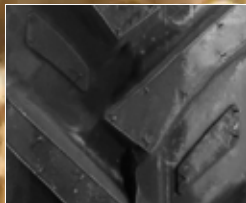
FARM SPECIALIST® HF-1 42



FARM SPECIALIST® I-1 42



TRAC CHIEF® I-3 43



FARM SPECIALIST® TB 43

COMAPCT UTILITY TRACTOR



FARM SPECIALIST® R-1 44



TURF PRO R-3
TURF PRO PLUS R-3 44



MULTI-TRAC CS R-3 44



SPECIAL APPLICATIONS



USA LOADER® 45

SKID STEER AND BACKHOE



TRAC CHIEF® 45

GROUND FORCE®
600/625XT 45GROUND FORCE®
400 R-4 46

GUARD DOG® HD 46

GROUND FORCE®
400 ULTRA 47ULTRA GUARD®
MX 47GROUND FORCE®
400 MX 47

LARGE TRACTOR



FSTR 48



CSL24 49



FARM SPECIALIST F-2

FARM SPECIALIST F-2M

FARM SPECIALIST F-3 INDUSTRIAL FRONT

FRONT TRACTOR, WAGONS, BALERS, SPREADERS, SEEDERS, AND FEED YARD MIXERS

FARM SPECIALIST® F-2 TRIPLE RIB

The Farm Specialist F-2 tire is a proven tire for front steering 2-wheel drive tractor applications. Its 3 rib design is optimal for steering response in loose and cultivated soils and has added stability with its wide center and shoulder ribs. Made in the USA.

SIZE	PRODUCT CODE	PLY RATING	DIAMETER†	WIDTH†	RIM WIDTH	ROLLING CIRC.	MAX CAPACITY @ 25 MPH	MAX PSI	TIRE WEIGHT
4.00-15SL	52F230	4	24.3	4.4	3.00	72.3	585	10.0	10.0
5.00-15SL (TT)	52F235	4	26.0	5.1	3.00	77.4	715	14.0	14.0
6.00-16SL	52F2751	6	28.9	6.6	4.0	89.4	1140	52.0	21.0
7.5L-15SL (TT)	52F290	6	29.1	8.0	6.00	87.1	1430	28.0	28.0
9.5L-15SL (TL)	52F344	8	31.5	9.9	7.00	94.0	1870	45.0	45.0
11L-15SL (TL)	52F318	8	32	11	8.00	96.1	2090	54.0	54.0
5.50-16SL (TT)	52F239	6	28.0	5.9	4.00	83.5	1050	18.0	18.0
6.50-16SL (TT)	52F281	6	29.8	7.3	4.50	88.9	1230	23.0	23.0
10.00-16SL (TL)	52F398	8	34.9	11	8.00	103.4	2340	53.0	53.0
7.50-16SL (TL)	52F384	8	31.8	7.9	5.50	94.0	1710	34.0	34.0
11.00-16SL (TL)	52F395	8	37.4	12.7	10.00	111.7	2340	80.0	80.0

(TT) indicates a tube-type tire. (TL) indicates a tubeless tires. These tires are not for highway use.

NHS tires are Non-Highway Service tires.

† Indicates mounted diameter and mounted width

FARM SPECIALIST® F-2M QUAD RIB

Developed for larger horsepower tractors, the Farm Specialist F-2M is a quad ribbed powerhouse that is self-cleaning and designed for channeling water in wet conditions. Made in the USA.

SIZE	PRODUCT CODE	PLY RATING	DIAMETER†	WIDTH†	RIM WIDTH	ROLLING CIRC.	MAX CAPACITY @ 25 MPH	MAX PSI	TIRE WEIGHT
11.00-16SL (TL)	53F395	8	37.2	13.1	10.00	111.4	2600	40	77.1
10.00-16SL F-2M (TL)	53F398	8	35.0	10.8	8.00	105.1	2340	44	65.2

(TT) indicates a tube-type tire. (TL) indicates a tubeless tires. These tires are not for highway use.

NHS tires are Non-Highway Service tires.

† Indicates mounted diameter and mounted width

FARM SPECIALIST® F-3 INDUSTRIAL FRONT

Primarily used on front tractor steering applications, the Farm Specialist F-3 tire offers a rugged and heavier tread construction for resistance to chipping, cracking and rib tearing. Its tightly grooved zig-zag tread is designed for turf protection and engineered to channel water in wet terrain. Made in the USA.

SIZE	PRODUCT CODE	PLY RATING	DIAMETER†	WIDTH†	RIM WIDTH	ROLLING CIRC.	MAX CAPACITY @ 25 MPH	MAX PSI	TIRE WEIGHT
11L - 16SL (TL)	565315	10	33.0	11.0	8.00	97.9	2470	52	55.2
11L - 16SL (TL)	565317	12	33.0	11.0	8.00	97.9	2760	64	54.3

(TT) indicates a tube-type tire. (TL) indicates a tubeless tires. These tires are not for highway use.

NHS tires are Non-Highway Service tires.



FARM SPECIALIST F-3 RADIAL IMPLEMENT

FARM SPECIALIST F-1 HIGHWAY SERVICE IMPLEMENT

FRONT TRACTOR, WAGONS, BALERS, SPREADERS, SEEDERS, AND FEED YARD MIXERS

FARM SPECIALIST® F-1 HIGHWAY SERVICE IMPLEMENT

Used for highway service implement applications, the Farm Specialist F-1 tire is specially designed for towed vehicle applications at intermittent highway speeds. DOT approved for highway use. Made in the USA.

SIZE	PRODUCT CODE	LOAD RANGE	DIAMETER†	WIDTH†	RIM WIDTH	ROLLING CIRC.	MAX CAPACITY @ 62 MPH	MAX PSI	TIRE WEIGHT
9.5L-15 (TL)	51H360	E	30.2	9.5	7.00	89.6	3080	75	43.4
10.00-15 (TL)	51H361	D	33.5	11.0	8.00	100.0	3960	60	52.3
11L-15 (TL)	51H392	F	30.6	11.0	8.00	90.7	3960	90	55.0
12.5L-15 (TL)	6A0562	F	32.5	12.9	10.00	99.0	4680	90	72.5

(TT) indicates a tube-type tire. (TL) indicates a tubeless tires. These tires are not for highway use.

† Indicates mounted diameter and mounted width

FARM SPECIALIST® F-3 RADIAL IMPLEMENT

With it's radial construction and IF technology design, this tire is built to carry up to 20% more load at the same PSI of a standard radial implement.

SIZE	PRODUCT CODE	PLY RATING	DIAMETER†	WIDTH†	RIM WIDTH	ROLLING CIRC.	MAX CAPACITY @ 40 MPH	MAX PSI	TIRE WEIGHT
280/70R15 (TL)	6A09271	-	30.5	10.6	8.00	91	4680	64	54.0

These tires are not for highway use. † Indicates mounted diameter and mounted width

FSE F-1 IMPLEMENT

Used for highway service implement applications, the FSE F-1 Implement tire is specially designed for towed vehicle applications at intermittent highway speeds. DOT approved for highway use.

SIZE	PRODUCT CODE	DIAMETER†	WIDTH†	RIM WIDTH	ROLLING CIRC.	MAX CAPACITY @ 62 MPH	MAX PSI	TIRE WEIGHT
9.5L-15FI	6X14433	30.20	9.50	7.0	88.4	3420	90	41.9
11L-15FI	6X14443	30.80	10.60	8.0	90.9	3960	90	44.1
12.5L-15FI	6X14453	32.10	12.10	10.0	134.0	4680	90	60.6

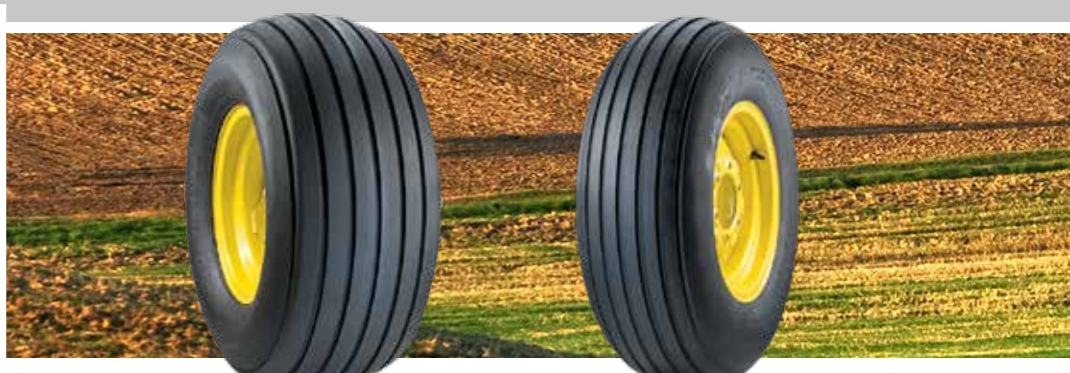
These tires are not for highway use. † Indicates mounted diameter and mounted width

RADIAL I-1 IMPLEMENTS

The new Carlisle IF radial implement tires are designed to carry 20% higher loads at the same pressure as standard metric tires. These steel belted tires will provide improved tread wear and lower soil compaction due to a larger footprint.

SIZE	PRODUCT CODE	DIAMETER†	WIDTH†	RIM WIDTH	ROLLING CIRC.	MAX CAPACITY @ 40 MPH	MAX PSI	TIRE WEIGHT
IF280/70R15 TL	6A15761	30.50	10.60	8.0	89.0	4680	64	55.0
IF240/80R15 TL	6A15771	30.10	9.70	8.0	88.0	3200	46	50.0

These tires are not for highway use. † Indicates mounted diameter and mounted width



FARM SPECIALIST HF-1

FARM SPECIALIST I-1

FRONT TRACTOR, WAGONS, BALERS, SPREADERS, SEEDERS, AND FEED YARD MIXERS

FARM SPECIALIST® HF-1 IMPLEMENT

The Farm Specialist HF-1 implement tire is designed for higher performance applications with heavier loads and when high flotation is needed. Made in the USA.

SIZE	PRODUCT CODE	PLY RATING	DIAMETER†	WIDTH†	RIM WIDTH	ROLLING CIRC.	MAX CAPACITY @ 30 MPH	MAX PSI	TIRE WEIGHT
25 x 7.50 -15 NHS (TL)	51F378	6	25.2	7.5	5.50	73.3	1230	45	22.2
27 x 9.50 -15 NHS (TL)	51F395	6	27.0	9.6	7.00	79.2	1610	45	29.0
31x13.50-15 (TL)	6A0970	10	30.9	13.8	10.00	95.0	3080	60	61.0

(TT) indicates a tube-type tire. (TL) indicates a tubeless tires. These tires are not for highway use. † Indicates mounted diameter and mounted width

FARM SPECIALIST® I-1 IMPLEMENT

With its wide rib tread design, the Farm Specialist I-1 tire is aimed for floatation on farm implements for excellent lateral stability and rolling resistance.

SIZE	PRODUCT CODE	PLY RATING	DIAMETER†	WIDTH†	RIM WIDTH	ROLLING CIRC.	MAX CAPACITY @ 30 MPH	MAX PSI	TIRE WEIGHT
26x12.00-12 (TL)	510363	10	25.5	11.7	10.50	75.7	3110	52	29.0
9.5L-14SL (TL)	51F399	8	29.4	9.2	7.0	87.00	2400	44	29.7
11L-14SL (TL)	51F391	8	29.6	10.6	8.00	87.7	2470	36	32.5
5.00-15SL (TT)	51F235	4	25.2	5.4	4.00	74.7	950	36	12.0
5.90-15SL (TT)	51F252	4	26.3	6.3	4.50	77.9	1140	36	13.5
6.70-15SL (TL)	51F388	6	28.2	7.2	4.50	83.7	1610	44	16.9
7.60-15SL (TL)	51F337	8	28.7	7.9	5.50	85.0	2090	52	27.9
9.5L-15 (TL)	6X17713	8	29.9	9	7.00	88.1	2470	44	27.0
9.5L-15 (TL)	6X17283	12	29.9	8.8	7.00	88.5	3200	64	29.0
10.00-15SL (TL)	51F385	8	33.4	11.0	8.00	98.6	3200	40	46.7
11L-15SL (TL)	6X17723	8	30.6	10.9	8.00	90.0	2540	36	32.0
11L-15SL (TL)	6X17263	12	30.6	10.7	8.00	90.6	3200	52	41.0
12.5L-15SL (TL)	6X17733	8	32.2	12.3	10.00	95.3	3000	36	42.0
12.5L-15SL (TL)	6X17273	12	32.6	12.1	10.00	96.5	3860	52	58.0
12.5L-16SL (TL)	51F353	14	33.4	12.5	10.00	99.0	4180	56	53.5
14L-16.1SL (TL)	6A0340	14	37.13	14.15	11.00	108.5	5200	52	78.0
16.5L-16.10SL (TL)	51F350	10	40.8	17.1	14.00	117.5	5200	36	101.0
18L-16.1SL (TL)	510130	10	32.5	17.0	14.00	95.2	4180	32	72.0
19L-16.1SL (TL)	510137	12	42.4	19.0	16.0	125.82	6600	36	110.0
21.5L-16.1SL	510135	10	44.5	21.5	18.0	132.05	6600	28	114.0
32x15.5-16.5SL (TL)**	6A0086	14	32.2	15.6	16.50	97.4	5840**	90	87.5
11L-15SL (TL)	51F3181	8	31.1	11.6	8.0	92.00	2540	36	33.3

(TT) indicates a tube-type tire. (TL) indicates a tubeless tires. These tires are not for highway use. † Indicates mounted diameter and mounted width *NOTE: 18L - 16.1SL I-1 is a 7 Rib Design.

** NOTE: 32 x 15.5-16.5SL I-1 is rated at 25 mph.



TRAC CHIEF I-3

FARM SPECIALIST TB

FRONT TRACTOR, COMPACT TRACTOR AND GENERAL DUTY SKID STEER APPLICATIONS

TRAC CHIEF® I-3

Designed for traction on implements and backhoes, the Trac-Chief I-3 tire delivers diverse capabilities of aggressive and durable traction on soft surfaces while still providing a smooth ride. It's directional tread design and high load capacity brings stability and easy steering for front wheel tractor applications and backhoe loaders. Made in the USA.

SIZE	PRODUCT CODE	PLY RATING	DIAMETER†	WIDTH†	RIM WIDTH	ROLLING CIRC.	MAX CAPACITY @ 25 MPH	MAX PSI	TIRE WEIGHT
12.4-16 (TL)	570122	6	37.2	12.9	11.00	108.1	2340	30	79.5
10.5/80-18 (TL)*	*570120	10	35.6	10.8	9.00	105.5	3840	54	70.4
12.5/80-18 (TL)*	*570121	12	38.5	12.5	9.00	114.6	5360	55	96.0

(TT) indicates a tube-type tire. (TL) indicates a tubeless tires. These tires are not for highway use. † Indicates mounted diameter and mounted width

FARM SPECIALIST® TB

The Farm Specialist TB is used primarily on compact utility tractors. The multi-angle, curved lug bars provide improved traction and self-cleaning properties. It is an all-purpose tire that offers aggressive performance and superior ride comfort.

SIZE	PRODUCT CODE	PLY RATING	DIAMETER†	WIDTH†	RIM WIDTH	ROLLING CIRC.	MAX CAPACITY @ 20 MPH	MAX PSI	TIRE WEIGHT
7-16 (TL)	6X17393	8	29.2	7.2	6.00	86.0	1320	42	26.0
8-16 (TL)	6X17403	8	31.1	8.3	6.00	92.0	1520	42	31.0
9.5-16 (TL)	6X17413	8	33.3	9.5	8.00	98.5	1760	36	45.0
9.5-24 (TL)	6X18183	8	41.6	9.1	8.00	122.0	2470	41	60.0
11.2-24 (TL)	6X17353	8	43.5	11.2	10.00	128.0	2760	35	72.0
12.4-24 (TL)	6X17363	8	45.7	12.4	11.00	134.0	3200	33	88.0
13.6-24 (TL)	6X17453	8	47.6	13.6	12.00	140.0	3420	28	108.0
14.9-24 (TL)	6X17373	8	49.8	14.9	13.00	146.0	3960	26	125.0
16.9-24 (TL)	6X17383	8	52.6	16.9	15.00	155.0	4540	25	157.0
13.6-28 (TL)	6X19283	8	51.6	13.6	12.00	152.0	3640	29	125.0
16.9-28 (TL)	6X19293	10	56.5	16.9	15.00	170.0	5360	29	172.0
16.9-34 (TL)	6X19303	8	62.4	16.9	15.00	183.0	5200	25	200.0
18.4-34 (TL)	6X19323	10	65.0	18.4	16.00	191.0	6600	26	229.0
13.6-38 (TL)	6X19313	8	61.6	13.6	12.00	181.0	4300	29	154.0
15.5-38 (TL)	6X19353	8	62.4	15.5	14.00	184.0	4540	26	180.0
18.4-38 (TL)	6X19333	10	68.9	18.4	16.00	203.0	7150	26	251.0

(TT) indicates a tube-type tire. (TL) indicates a tubeless tires. These tires are not for highway use. † Indicates mounted diameter and mounted width



FARM SPECIALIST R-1

TURF PRO R-3

MULTI-TRAC CS R-3

FRONT TRACTOR, WAGONS, BAILERS, SPREADERS, SEEDERS AND FEED YARD MIXERS

FARM SPECIALIST® R-1

Used primarily on compact utility tractors, the Farm Specialist R-1 tire features an overlapping center tread lug that performs in both wet and dry conditions. The all-purpose tire features a unique multi-angle long bar tread for aggressive performance, excellent traction and lateral stability. Made in the USA.

SIZE	PRODUCT CODE	PLY RATING	DIAMETER†	WIDTH†	RIM WIDTH	ROLLING CIRC.	MAX CAPACITY @ 20 MPH	MAX PSI	TIRE WEIGHT
6-12 (TL)	570030	6	23.0	6.1	5.00	68.9	735	40	19.0
7-14 (TL)	570000	6	27.1	7.4	6.00	80.5	990	36	27.0
9.5-20 (TL)	6A0467	8	36.5	9.4	8.00	112.7	2040	40	69.6
8.3-24 (TL)	570004	6	39.1	8.3	7.00	117.2	1610	34.0	82.0
9.5-24 (TL)	570005	6	41.3	9.5	8.00	123.2	1870	30.0	77.0

(TT) indicates a tube-type tire. (TL) indicates a tubeless tires. These tires are not for highway use. † Indicates mounted diameter and mounted width

TURF PRO® R-3/TURF PRO® PLUS R-3

Designed for mowing and turf applications, this series is engineered with shallow non-skid depth with isolated tread elements that create minimal ground disturbance for a turf-friendly result. Made in the USA.

SIZE	PRODUCT CODE	PLY RATING	DIAMETER†	WIDTH†	RIM WIDTH	ROLLING CIRC.	MAX CAPACITY @ 30 MPH	MAX PSI	TIRE WEIGHT	TREAD DEPTH (32nds)
31x15.5-15 (TL)*	560589	8	30.3	14.2	13.00	90.4	2760*	45	58.5	44.0
13.6-16 (TL)	570080	4	38.2	16.0	12.00	112.8	1570	14	82.3	44.0
9.5-24 (TL)	570084	6	40.3	9.5	8.00	120.5	1870	30	59.0	44.0
11.2-24 (TL)	570085	6	42.4	11.2	10.00	126.3	2080	26	82.2	44.0

These tires are not for highway use. * NOTE: 31x15.5-15 Turf Pro Plus R-3 has a max capacity at 30 mph.

MULTI-TRAC CS R-3

With its squared lugs and wide base for stability, the Multi-Trac CS R-3 is excellent for minimal ground disturbance for turf and mowing applications. Made in the USA.

SIZE	PRODUCT CODE	PLY RATING	DIAMETER†	WIDTH†	RIM WIDTH	ROLLING CIRC.	MAX CAPACITY @ 30 MPH	MAX PSI	TIRE WEIGHT
41x14.00-20 (TL)	570083	4	42.0	14.8	11.00	127.0	3080	26	104.0
44x18-20 (TL)	6A0375	6	44.8	18.5	14.00	132.3	4300	30	135.0

(TT) indicates a tube-type tire. (TL) indicates a tubeless tires. These tires are not for highway use. † Indicates mounted diameter and mounted width

GROUND FORCE R3

The Ground Force R3 Diamond Tread tire features a high flotation and turf-friendly design. It is optimal for tractor applications where low ground pressure is required such as golf courses or sandy soil.

SIZE	PRODUCT CODE	PLY RATING	DIAMETER†	WIDTH†	RIM WIDTH	ROLLING CIRC.	MAX CAPACITY @ 25 MPH	MAX PSI	TIRE WEIGHT
23.1-26 TL	6X17433	16	61.4	23.1	20.0	179.0	9650	33	310

(TT) indicates a tube-type tire. (TL) indicates a tubeless tires. These tires are not for highway use. † Indicates mounted diameter and mounted width



GROUND FORCE 600

USA LOADER

TRAC CHIEF

GENERAL DUTY SKID STEER AND COMPACT TRACTOR APPLICATIONS

GROUND FORCE® 600/625 XT

Ground Force 600 Series is built for backhoe loaders in all weather conditions. With its rugged, heavy-duty construction, it withstands rigorous operating site conditions.

SIZE	PRODUCT CODE	PLY RATING	DIAMETER†	WIDTH†	RIM WIDTH	ROLLING CIRC.	MAX CAPACITY @ 25 MPH	MAX PSI	TIRE WEIGHT
17.5L-24	6X14312	12	50.0	17.5	15.00	145.0	6950	39	173.0
16.9-24	6X14693	12	51.6	16.9	15.00	153.0	7150	38	184.0
19.5L-24	6X14793	12	51.4	19.0	16.00	155.0	7600	33	228.0
21L-24	6X17253	14	54.2	21.0	18.00	157.0	9100	35	250.0

(TT) indicates a tube-type tire. (TL) indicates a tubeless tires. These tires are not for highway use. † Indicates mounted diameter and mounted width

USA LOADER®

Engineered with lateral grooves and a “Boot Heel Lug” tread configuration, the USA Loader brings traction and stability on specialty applications where safety and stability are critical. Made in the USA.

SIZE	PRODUCT CODE	PLY RATING	DIAMETER†	WIDTH†	RIM WIDTH	ROLLING CIRC.	MAX CAPACITY @ 5 MPH	MAX PSI	TIRE WEIGHT
305/70D16.5NHS (TL)	6A0170	10	32.9	12.6	9.75	98.5	5600	65	77.0

(TT) indicates a tube-type tire. (TL) indicates a tubeless tires. These tires are not for highway use. † Indicates mounted diameter and mounted width

TRAC CHIEF®

Applied on general duty skid steer and compact tractor applications, the Trac Chief is engineered with a flat profile for increased stability, rugged tread compounds and a built-in rim gauge to protect its bead area from hazards and debris. Made in the USA.

SIZE	PRODUCT CODE	PLY RATING	DIAMETER†	WIDTH†	RIM WIDTH	ROLLING CIRC.	MAX CAPACITY @ 10 MPH	MAX PSI	TIRE WEIGHT	TREAD DEPTH (32nds)
20x8.00-10 (TL)	560483	4	19.3	8.2	7.00	57.1	910	24	18.0	16
5.70-12 (TL)	51S3C2	4	22.4	5.5	4.50	68.9	1430	60	16.0	17
26x12.00-12 (TL)	6A0282	8	25.7	12.6	10.50	78.0	3020	50	44.0	20
27x10.50-15 (TL)	560369	8	26.7	10.2	8.50	81.0	3740	60	41.0	17
28x8.50-15 (TL)	570139	6	28.3	8.8	7.00	82.1	1870	45	32.0	16
23x8.50-14 (TL)	51S388	4	23	8	7.00	69.2	1480	35	23.0	17
10-16.5 (TL)	51S3D1	8	30.5	10.7	8.25	92.1	4140	60	45.0	19
12-16.5 (TL)	51S3J7	10	32.8	12.5	9.75	98.7	5600	65	64.0	23
385/65D19.5 (TL)	511703	16	40.1	16.3	12.25	118.9	11000	95	116.0	25

These tires are not for highway use.

† Indicates mounted diameter and mounted width



GROUND FORCE 400 R-4

GUARD DOG HD

GROUND FORCE® 400 R-4

Ground Force 400 R-4 features a robust sidewall design and tread compound ideal for general duty skid steer applications.

SIZE	PRODUCT CODE	PLY RATING	DIAMETER†	WIDTH†	RIM WIDTH	ROLLING CIRC.	MAX CAPACITY @ 5 MPH	TIRE WEIGHT	TREAD DEPTH (32nds)
18x8.50-10 (TL)	6X17763	4	18.6	8.1	7.00	55.5	825	14.4	16
23x8.50-12 (TL)	6X17803	6	22.8	8.2	7.00	69.7	1820	27.0	14
25x8.50-14 (TL)	6X17773	6	25.8	8.3	7.00	78.6	2150	30.0	17
27x8.50-15 (TL)	6X17793	6	27.0	8.4	7.00	80.0	2400	34.6	17
27x10.50-15 (TL)	6X17783	6	27.4	10.4	8.50	82.9	2600	36.6	17
10-16.5 (TL)	6X17213	10	31.4	10.4	8.25	94.0	4680	51.0	21
12-16.5 (TL)	6X17243	12	32.7	12.0	9.75	99.0	6320	72.0	25
14-17.5 (TL)	6X17743	14	36.9	13.6	10.50	108.7	8550	85.0	25
15-19.5 (TL)	6X17753	14	40.1	15.3	11.75	118.7	9900	24.0	26

These tires are not for highway use. † Indicates mounted diameter and mounted width

GUARD DOG® HD

Designed for heavy-duty skid steers, the Guard Dog HD tire has premium tread compounds for tougher service conditions and rigorous construction applications. With its stepped-off outer tread lugs and squared shoulder design, the Guard Dog HD delivers maximum performance and stability on the work site. Made in the USA.

SIZE	PRODUCT CODE	PLY RATING	DIAMETER†	WIDTH†	RIM WIDTH	ROLLING CIRC.	MAX CAPACITY @ 5 MPH	MAX PSI	TIRE WEIGHT	TREAD DEPTH (32nds)
33x15.50-16.5 (TL)	570031	12	32.8	14.4	12.00	97.3	6835	60	97.3	28
10-16.5NHS (TL)	570130	10	30.9	10.3	8.30	90.3	4710	75	56.6	26
12-16.5NHS (TL)	570131	12	32.7	12.1	9.75	95.6	6320	80	85.0	28

"NHS" tires are Non-Highway Service tires. † Indicates mounted diameter and mounted width



ULTRA GUARD

GROUND FORCE 400 ULTRA

GROUND FORCE 400 MX

ULTRA GUARD MX

SEVERE DUTY SKID STEER APPLICATIONS

ULTRA GUARD®

Engineered for severe service skid steers, the Ultra Guard tire is engineered with an open shoulder design displaying a lug void essential for abrasive surface conditions. Its extra deep 44/32" tread depth provides a 70% increase depth than other premium skid steer products. With a tread yielding a 14% increased tire life and a thick sidewall buff bar for extra protection, the Ultra Guard tire is proven for absolute durability. Made in the USA.

SIZE	PRODUCT CODE	PLY RATING	DIAMETER†	WIDTH†	RIM WIDTH	ROLLING CIRC.	MAX CAPACITY @ 5 MPH	MAX PSI	TIRE WEIGHT	TREAD DEPTH (32nds)
10.00-16.5	560402	10	30.43	10.4	8.25	92.4	4710	75	79.3	44
12.00-16.5	560403	12	32.73	12.1	9.75	99.0	6320	80	99.6	44

These tires are not for highway use. † Indicates mounted diameter and mounted width

GROUND FORCE® 400 ULTRA

The Ground Force 400 Ultra is a severe service skid steer tire. Its tread depth is 70% deeper than other premium skid steer tires and yields a 14% longer service life. With a thick sidewall buff bar for extra

SIZE	PRODUCT CODE	PLY RATING	DIAMETER†	WIDTH†	RIM WIDTH	ROLLING CIRC.	MAX CAPACITY @ 5 MPH	MAX PSI	TIRE WEIGHT	TREAD DEPTH (32nds)
10-16.5	6X17813	10	30.6	10.4	8.25	92.3	4680	75	80.0	44
12-16.5	6X17823	12	33.3	11.8	9.75	100.0	6320	80	102.0	44

These tires are not for highway use. † Indicates mounted diameter and mounted width *NOTE: Tire sizes shown with the asterisk are Trac Chief XT (XT) tread pattern, used for heavier loads.

GROUND FORCE® 400 MX

The Ground Force 400 MX is a severe duty multi-surface skid steer tire. It has a reinforced carcass for increased load capacity, best in class tread depth, and an abrasion, cut, and puncture resistant tread compound. The non-directional tread pattern offers superior performance on both hard and soft surfaces.

SIZE	PRODUCT CODE	PLY RATING	DIAMETER†	WIDTH†	RIM WIDTH	ROLLING CIRC.	MAX CAPACITY @ 5 MPH	MAX PSI	TIRE WEIGHT	TREAD DEPTH (32nds)
10-16.5 (TL)	6X17063	10	32	10.2	8.25	96	4680	75	94.0	47
12-16.5 (TL)	6X17073	14	33.8	12.2	9.75	104	6800	90	115.0	47

These tires are not for highway use. † Indicates mounted diameter and mounted width

ULTRA GUARD® MX

The Ultra Guard MX tire is engineered for severe duty skid steer applications. Designed with a unique large angled, non-directional center lug tread design, the Ultra Guard MX delivers increased performance on soft and hard surfaces. Made in the USA.

SIZE	PRODUCT CODE	PLY RATING	DIAMETER†	WIDTH†	RIM WIDTH	ROLLING CIRC.	MAX CAPACITY @ 5 MPH	MAX PSI	TIRE WEIGHT	TREAD DEPTH (32nds)
14-17.5 NHS (TL)	6A0327	14	36.3	14.4	10.50	106.2	8540	80	117.0	42

These tires are not for highway use. † Indicates mounted diameter and mounted width



FSTR

HEAVY DUTY, LARGE TRACTOR APPLICATIONS

FSTR

The FSTR is a line of R1-W radial tires with rim diameters ranging from a 16" to 48". The radial construction of these tires will deliver the traction and smooth ride for farmers to increase their efficiency in the field.

CARLISLE LINE	SIZE PLATE	PRIMARY LOAD RATING				SW (IN)	OD (IN)	TREAD DEPTH (AT CENTER) 32NDS	ROLLING CIRCUMFERENCE (INCHES)	STATIC LOAD RADIUS (INCHES)
		US SKU	PLY LOAD INDEX	LOAD CAPACITY (LBS)	PRESSURE (PSI)					
FSTR	9.5R20 (TL)	6A05652	108A8	2,205	23	9.49	36.93	42	111	16.6
FSTR	340/85 R24 (TL)	6A05672	125A8	3,640	23	13.50	46.77	54	140	21.0
FSTR	380/85 R24 (TL)	6A05722	131A8	4,300	23	14.96	49.45	55	147	22.1
FSTR	380/85 R30 (TL)	6A06532	135A8	4,800	23	14.96	55.43	55	166	24.9
FSTR	420/85 R30 (TL)	6A05692	140A8	5,520	23	16.46	58.11	60	174	26.1
FSTR	460/85 R30 (TL)	6A05732	145A8	6,400	23	17.91	60.79	66	181	27.2
FSTR	460/85 R34 (TL)	6A05742	147A8	6,800	23	17.91	64.80	66	194	29.1
FSTR	460/85 R38 (TL)	6A06582	149A8	7,150	23	17.91	68.78	66	206	30.9
FSTR	380/90 R46 (TL)	6A08352	159D	9,645	58	14.96	73.23	57	221	33.1



CSL 24

CSL 24

The CSL 24 bias R-1 tire offers an angled tread that provides traction and long life. Its excellent grip with enhanced cut and chip resistant tread is designed for use with tractors, sprayers and harvesters.

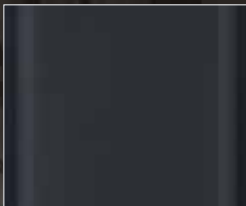
CARLISLE LINE	SIZE PLATE	SKU	PLY	PRIMARY LOAD RATING		SW (IN)	OD (IN)	TREAD DEPTH (AT CENTER) 32NDS	ROLLING CIRCUMFERENCE (INCHES)	STATIC LOAD RADIUS (INCHES)
				LOAD CAPACITY (LBS)	PRESSURE (PSI)					
CSL24	11.2-24 (TT)	6A05962	8	2,540	36	11.18	43.50	44	130	19.6
CSL24	12.4-24 (TT)	6A05982	6	2,400	24	12.40	45.67	43	137	20.5
CSL24	14.9-24 (TT)	6A06032	6	3,000	20	14.88	49.80	44	149	22.3
CSL24	9.5-24 (TT)	6A05932	6	1,870	30	9.49	41.34	34	124	18.5
CSL24	14.9-26 (TT)	6A06142	10	4,080	32	14.88	51.77	45	154	23.2
CSL24	18.4-26 (TT)	6A06072	10	5,200	26	18.39	57.52	47	171	25.7
CSL24	11.2-28 (TT)	6A06082	6	2,200	26	11.18	47.44	42	142	21.3
CSL24	12.4-28 (TT)	6A06102	6	2,540	24	12.40	49.61	43	148	22.2
CSL24	13.6-28 (TT)	6A06132	8	3,300	28	13.58	51.57	45	154	23.1
CSL24	14.9-28 (TT)	6A06152	6	3,200	20	14.88	53.74	45	160	24.0
CSL24	16.9-28 (TT)	6A06182	10	4,680	28	16.89	56.50	48	168	25.3
CSL24	16.9-30 (TT)	6A06222	8	4,400	24	16.89	58.46	48	174	26.1
CSL24	18.4-30 (TT)	6A06232	8	4,800	20	18.39	61.02	47	182	27.2
CSL24	18.4-34 (TT)	6A06282	10	6,000	26	18.39	64.96	47	193	29.0
CSL24	12.4-38 (TT)	6A06302	8	3,520	32	12.40	59.65	44	178	26.7
CSL24	13.6-38 (TT)	6A06312	6	3,300	22	13.58	61.61	45	184	27.6
CSL24	15.5-38 (TT)	6A06162	8	4,080	26	15.51	61.81	47	184	27.7
CSL24	16.9-38 (TT)	6A06352	8	4,940	24	16.89	66.34	48	198	29.6
CSL24	18.4-38 (TT)	6A06362	10	6,400	26	18.39	68.90	48	205	30.8
CSL24	12.4-28 (TT)	6A06112	8	3,080	34	12.40	49.60	43	148	22.2

Industrial

ALL PURPOSE



**INDUSTRIAL
DEEP TRACTION** 52



**ROAD
ROLLER** 52



**INDUSTRIAL
ALL PURPOSE** 56



**PREMIUM
WIDE TRAC** 57



**GROUND FORCE®
ULTRA RIB** 57



**GROUND FORCE®
300 G-2** 56



**GROUND FORCE®
LFT** 56



**GROUND FORCE®
500** 56





INDUSTRIAL DEEP TRACTION

ROAD ROLLER

INDUSTRIAL ALL PURPOSE

MATERIAL HANDLING, MINING, COMPACTION AND ROAD PAVING EQUIPMENT

INDUSTRIAL DEEP TRACTION

With its flat tread and reinforced beads, the Industrial Deep Traction tire is an essential standard duty tire that delivers stability and long lasting performance.

SIZE	PRODUCT CODE	PLY RATING	DIAMETER†	WIDTH†	RIM WIDTH	MAX CAPACITY @ 10 MPH	MAX PSI	TIRE WEIGHT	TREAD DEPTH (32nds)
5.70/5.00-8NHS (TT)	60126	8	18.2	5.5	4.5/3.0	1830*	115	12	9
6.90/6.00-9NHS (TT)	60101	10	21.9	6.9	5.5/4.0	3715	125	20	19
6.50-10NHS (TT)	60105	10	23.4	7.4	5.00	4225	115	25	20
7.00-12NHS (TT)	60102	12	27.4	7.8	5.00	5995	125	37	21
8.25-15NHS (TT)	60104	12	33.6	9.8	6.50	8680	105	59	23
29x8.00-15NHS (TT)	60103	12	29.2	7.5	5.50	6870	125	48	25

NHS tires are Non-Highway Service tires. Flap is included for these tube type (TT) tires. Unless otherwise noted, load limits listed are for the Load Wheel on Counter balanced Lift Trucks. Tire load limits will be lower if used on continuous service Industrial Vehicles.

*NOTE: Load limit listed for Steer Wheel on Counterbalanced Lift Truck at 15 MPH.

† Indicates mounted diameter and mounted width

ROAD ROLLER

The Road Roller tire offers a smooth and steady tread for a consistent and leveled ride. With superior heat resistant nylon fabric belts, this tire supports heavy-duty handling with effortless execution.

SIZE	PRODUCT CODE	PLY RATING	DIAMETER†	WIDTH†	RIM WIDTH	MAX CAPACITY @ 10 MPH	MAX PSI	TIRE WEIGHT
7.50-15NHS (TT)*	60127	12	30.9	8.6	6.00	5860	110	44.7
7.50-15NHS (TT)	60128	14	30.9	8.6	6.00	6300	125	49.3
8.5/90-15K (TL)	60130	6	30.9	8.6	6.00	3900	50	44.0

*For 7.50-15 size tube type. Use 5 degree flat base rim. Flap is included for the tube type (TT) tires.

**For 5 Degree Drop Center Rim only. Flap is included for the tube type (TT) tires.

† Indicates mounted diameter and mounted width

INDUSTRIAL ALL PURPOSE

Designed with two different rib patterns throughout the tread, the Industrial All Purpose tire presents a multi-purpose service of both traction and support with optimized weight distribution for stability with heavy equipment.

SIZE	PRODUCT CODE	PLY RATING	DIAMETER†	WIDTH†	RIM WIDTH	MAX CAPACITY @ 10 MPH	MAX PSI	TIRE WEIGHT	TREAD DEPTH (32nds)
7.50-10 (TT)	60100	E	25.3	7.6	5.50	1975	90	24	12
7.50-10 (TT)	60129	E	25.1	8.2	6.00	3050	100	25	12
6.90-9 (TT)	60106	E	21.8	7	4.50	2230	125	16.2	10
6.90-9 (TT)	60107	E	21.5	7	4.50	1630	75	14.8	10

Flap is included for these tube type (TT) tire.

† Indicates mounted diameter and mounted width



PREMIUM WIDE TRAC

GROUND FORCE ULTRA RIB GSE

MATERIAL HANDLING, MINING, COMPACTION AND ROAD PAVING EQUIPMENT

PREMIUM WIDE TRAC

The Premium Wide Trac tire offers superior level design with an extra heavy-duty sidewall for material handling applications. Its durable construction resists abrasions in sever conditions to maximize efficiency.

SIZE	PRODUCT CODE	PLY RATING	DIAMETER†	WIDTH†	RIM WIDTH	MAX CAPACITY @ 10 MPH	MAX PSI	TIRE WEIGHT	TREAD DEPTH (32nds)
5.70/5.00-8 (TT)	60118	8	18.5	5.5	3.00	1930	120	16	17
5.70/5.00-8 (TT)	60122	10	18.5	5.5	3.00	2340	150	17	17
6.90/6.00-9 (TT)	60110	10	22.2	6.0	4.00	3715	125	30	32
6.50-10 (TT)	60116	10	23.8	7.1	5.00	4225	115	40	32
7.00-12 (TT)	60111	12	27.3	7.5	5.00	5995	125	57	32
8.25-15 (TT)	60121	14	33.6	9.8	6.50	9385	120	91	24
28x9.00-15 (TT)	60119	12	27.3	8.8	7.00	6880	120	55	18
28x9.00-15 (TT)	60120	14	27.3	8.9	7.00	7530	140	56	18
2.50-15 (TT)	60123	18	29.1	9.1	7.50	10100	150	71	24
3.00-15 (TT)	60124	20	32.7	11.3	8.00	14500	135	123	26
7.50-16 (TT)	60125	12	32.3	8.5	6.00	8000	115	60	22

Flap is included for these tube type (TT) tires.

Unless otherwise noted, load limits listed are for the Load Wheel on Counterbalanced Lift Trucks.

Tire load limits will be lower if used on continuous service Industrial Vehicles.

† Indicates mounted diameter and mounted width

GROUND FORCE® ULTRA RIB GSE

Combined with a sturdy rib tread pattern and premium tread compounds, the Ground Force Ultra Rib GSE tire is specially designed for optimal performance on ground support equipment.

SIZE	PRODUCT CODE	PLY RATING	DIAMETER†	WIDTH†	RIM WIDTH	MAX CAPACITY @ 10 MPH	MAX PSI	TIRE WEIGHT	TREAD DEPTH (32nds)
9.00-10NHS (TT)	60108	10	27.2	9.7	6.00	3720	85	34.5	9
6.50-10NHS (TT)	60109	10	23.2	7.1	5.00	2535	115	28.6	24
6.90-6.00-9NHS (TT)	60131	10	21.6	6.8	4.00	2200	125	26.0	24
5.70-8NHS (TT)	60132	8	18.4	5.9	3.80	1470	120	12.8	11
4.80-8NHS (TT)	60133	8	16.5	4.8	3.80	1160	145	10.7	11

A flap is included for the Ground Force Ultra Rib GSE Tube Type (TT) tires.

"NHS" tires are Non-Highway Service tires.

† Indicates mounted diameter and mounted width



GROUND FORCE 300 G-2

GROUND FORCE LFT

MOTOR GRADER, COMPACTION AND ROAD PAVING, AND BOOM LIFT EQUIPMENT

GROUND FORCE® 300 G-2

The Ground Force 300 G-2 is a motor grader tire designed for stability. With its cut-resistant tread compound and self-cleaning tread pattern, it will deliver good traction in all weather conditions.

SIZE	PRODUCT CODE	PLY RATING	DIAMETER†	WIDTH†	RIM WIDTH	MAX CAPACITY @ 25 MPH	MAX PSI	TIRE WEIGHT	TREAD DEPTH (32nds)
13.00-24	6X14213	14	50.31	13.1	8.00	6600	51	157	30
14.00-24	6X14223	14	53.1	14.3	8.00	7600	48	169	34

NHS tires are Non-Highway Service tires.

† Indicates mounted diameter and mounted width

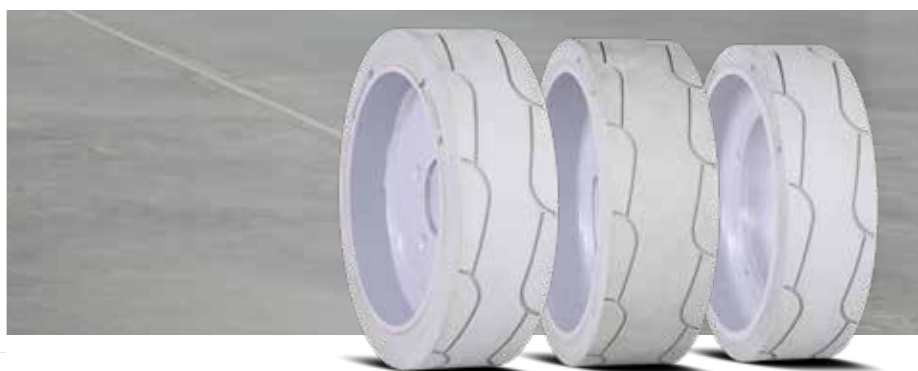
GROUND FORCE® LFT

Ground Force LFT is a low profile tire designed for boom lifts. Reinforced shoulders and a wide center tread bar provide superior stability and traction on uneven terrain.

SIZE	PRODUCT CODE	PLY RATING	DIAMETER†	WIDTH†	RIM WIDTH	MAX CAPACITY @ 10 MPH	MAX PSI	TIRE WEIGHT	TREAD DEPTH (32nds)
355/55D625 (TL)	6X16591	14	36.9	14.2	11.75	7600	75	123	9
18-625 (TL)	6X16521	16	41.2	17.5	15.00	15200	100	174	10

NHS tires are Non-Highway Service tires.

† Indicates mounted diameter and mounted width



ELECTRIC OR SLAB SCISSOR LIFT EQUIPMENT

GROUND FORCE® 500

Ground Force 500 scissor lift line offers replacement parts for major OEMs including Genie, JLG, Skyjack, and Haulotte. Designed for lateral stability, these solid non-marking tire assemblies are ideal for electric or slab scissor lifts.

CSG PN	OEM & PART NO.	SIZE	HUB TYPE
XA4A001	GENIE 57998	10x3	Tapered
XA4A002	GENIE 105122	12x4.5	Tapered
XA4A003	GENIE 105454	15x5	Tapered
XA4A004	GENIE 94908	22x7	8 hole
XA4A005	GENIE 94909	22x7	9 hole
XA4A008	JLG 2915012	323x100	5 hole
XA4A009	JLG 2915013	406x125	5 hole
XA4A010	JLG 4520177	14x4.5	5 hole
XA4A011	JLG 4520176	16x5	5 hole
XA4A013	SKYJACK 158436 F SKYJACK 158438 F	12x4	5 hole
XA4A014	SKYJACK 158437 R SKYJACK 158439 R	12x4	5 hole
XA4A136	SKYJACK 209400	12x4	Tapered
XA4A137	SKYJACK 209405	12x4	Tapered
XA4A019	SKYJACK 125785 F SKYJACK 132285 F SKYJACK 161891 F	16x5	5 hole
XA4A020	SKYJACK 125786 R SKYJACK 132284 R SKYJACK 161890 R	16x5	5 hole

To ensure correct fitment always look up your unit's serial number in the OEM Parts Manual for the correct tire part number.

Wheels



CREAM AG WHEEL 58



CREAM AG REVERSIBLE WHEEL 58



WHITE AG WHEEL 58



HIGHWAY SUPREME TRAILER WHEELS WHITE 59



HIGHWAY SUPREME TRAILER WHEELS SILVER 59



HIGHWAY EIGHT SPOKE TRAILER WHEELS WHITE 59



HIGHWAY EIGHT SPOKE TRAILER WHEELS GALVANIZED 60



HIGHWAY STANDARD TRAILER WHEELS WHITE 60



HIGHWAY STANDARD TRAILER WHEELS GALVANIZED 60





023 WHITE AG WHEEL



038 CREAM AG REVERSIBLE WHEEL



038 CREAM AG WHEEL

FRONT TRACTORS, WAGONS, BALERS, SPREADERS, SEEDERS, IRRIGATION SYSTEMS AND FEED YARD SCRAPERS

Cream Ag Wheel

PART NUMBER	RIM SIZE (IN)	COLOR	STYLE	CONTOUR	BOLT PATTERN (IN)	OFFSET (IN)	BACK SPACE (IN)	CENTER BORE (IN)	LOAD RATING (LBS)	WEIGHT (LBS)
1519288038B	15x5	Cream	Standard	JJ	4-5.0	-1/4	2 3/4	6	2540	21
1529713038B*	15x5	Cream	Reversible	JJ	6-6.0	1.125/-1.618	4.125/1.382	4 5/8	4000	21
1519293038B	15x6	Cream	Standard	JJ	6-6.0	+7/8	4 3/8	4 5/8	4180	23
1529771038B*	15x6	Cream	Reversible	JJ	6-6.0	1.125/-1.618	4.125/1.882	4 5/8	4180	24
1519294038B	15x8	Cream	Standard	JJ	6-6.0	+1 1/8	5 5/8	4 5/8	4180	23
1519299038B	15x8	Cream	Standard	JJ	8-8.0	-1 1/2	3	6	4180	27
1526848038B	15x8	Cream	Standard	LB	6-6.0	+1 1/8	5 5/8	4 5/8	4180	34
1519300038B	15x10	Cream	Standard	JJ	8-8.0	-1 1/2	4	6	4500	31
1526074038B	15x10	Cream	Standard	LB	8-8.0	-1 1/2	4	6	4680	38
1619296038B	16x6	Cream	Standard	JJ	6-6.0	+1	4 1/2	4 5/8	4180	31
1619297038B	16x8	Cream	Standard	JJ	6-6.0	+1 1/8	5 5/8	4 5/8	4180	32
1619301038B	16x8	Cream	Standard	JJ	8-8.0	-1 1/2	3	6	4500	31
1619298038B	16x10	Cream	Standard	JJ	6-6.0	+1 1/8	6 5/8	4 5/8	4180	37
1619302038B	16x10	Cream	Standard	JJ	8-8.0	-1 3/8	4 1/8	6	4500	36

*indicates Standard/Reverse for Offset and Back Space

White Ag Wheel

PART NUMBER	RIM SIZE (IN)	COLOR	STYLE	CONTOUR	BOLT PATTERN (IN)	OFFSET (IN)	BACK SPACE (IN)	CENTER BORE (IN)	LOAD RATING (LBS)	WEIGHT (LBS)
1429722023B	14x6	White	Standard	JJ	6-6.0	+7/8	4 3/8	4 5/8	2540	21
1519295023B	15x10	White	Standard	JJ	6-6.0	+1 1/8	6 5/8	4 5/8	4180	34
1519300023B	15x10	White	Standard	JJ	8-8.0	-1 1/2	4	6	4500	32
1619302023B	16x10	White	Standard	JJ	8-8.0	-1 3/8	4 1/4	6	4500	36



HIGHWAY SUPREME, WHITE WITH STRIPES



HIGHWAY SUPREME SILVER



HIGHWAY EIGHT SPOKE, WHITE WITH STRIPES

BOAT TRAILERS, CARGO TRAILERS, HORSE AND STOCK TRAILERS, RV-TOWABLE UTILITY AND SPECIALTY TRAILERS

HIGHWAY SUPREME TRAILER WHEEL - WHITE WITH RED AND BLUE STRIPES (BOXED)

PART NUMBER	RIM SIZE	BOLT PATTERN	OFFSET (+/-)	REAR SPACING	SHIPPING WEIGHT	CENTER BORE (IN.)	LOAD RATING
1222432564B	12x4.00	5x4.5	0	2.38	10	2.84	1520
1222433564B	12x4.00	4x4.0	0	2.38	10	2.84	1520
1322434564B	13x4.50	5x4.6	0	2.75	15	3.30	1660
1422676564B	14x6.00	5x4.5	0	3.55	16	3.30	2040
1522665564B	15x5.00	5x4.5	0	3.05	17	3.20	2150
1522667564B	15x6.00	5x4.5	0	3.55	20	3.30	2830
1622670564B	16x6.00	8x6.5	0	3.55	30	4.90	4480
1622671564B	16x6.00	6x5.5	0	3.55	27	4.28	3750

HIGHWAY SUPREME TRAILER WHEELS - SILVER (BOXED)

PART NUMBER	RIM SIZE	BOLT PATTERN	OFFSET (+/-)	REAR SPACING	SHIPPING WEIGHT	CENTER BORE (IN.)	LOAD RATING
1222432284B	12x4.00	5-4.50	0	2 1/5	11	2.80	1520
1322434284B	13x4.50	5-4.50	0	3	15	3.30	1660
1422676284B	14x6.00	5-4.50	0	3 1/2	16	3.30	2040
1522665284B	15x5.00	5-4.50	0	3	17	3.20	2150
1522667284B	15x6.00	5-4.50	0	3 1/2	20	3.30	2150
1522666284B	15x6.00	6-5.50	0	3 1/2	19	4.28	3080
1622671284B	16x6.00	6-5.50	0	3 1/2	27	4.28	3750
1622670284B	16x6.00	8-6.50	0	3 1/2	30	4.90	4480

HIGHWAY EIGHT SPOKE TRAILER WHEELS - WHITE WITH RED AND BLUE STRIPES (BOXED)

PART NUMBER	RIM SIZE	BOLT PATTERN	OFFSET (+/-)	REAR SPACING	SHIPPING WEIGHT	CENTER BORE (IN.)	LOAD RATING
1222418564B	12x4.00	4-4.00	0	2 1/2	10	2.80	1520
1222419564B	12x4.00	5-4.50	0	2 1/2	10	2.80	1520
1322420564B	13x4.50	5-4.50	0	2 1/2	15	3.30	1660
1422675564B	14x6.00	5-4.50	0	3 1/2	16	3.30	1870
1522661564B	15x5.00	5-4.50	0	3	17	3.20	2150
1522659564B	15x6.00	5-4.50	0	3 1/2	20	3.30	2150
1522664564B	15x6.00	5-4.75	0	3 1/2	20	3.30	2830
1522663564B	15x6.00	5-5.00	0	3 1/2	20	3.30	2830
1522662564B	15x6.00	5-5.50	0	3 1/2	19	4.28	2830
1522660564B	15x6.00	6-5.50	0	3 1/2	19	4.28	3080
1622669564B	16x6.00	6-5.50	0	3 1/2	27	4.28	3750
1622668564B	16x6.00	8-6.50	0	3 1/2	30	4.90	4480



HIGHWAY EIGHT SPOKE, GALVANIZED



HIGHWAY STANDARD, WHITE



HIGHWAY STANDARD, GALVANIZED

BOAT TRAILERS, CARGO TRAILERS, HORSE AND STOCK TRAILERS, RV-TOWABLE UTILITY AND SPECIALTY TRAILERS

HIGHWAY EIGHT SPOKE TRAILER WHEELS - GALVANIZED (BOXED)

PART NUMBER	RIM SIZE	BOLT PATTERN	OFFSET (+/-)	REAR SPACING	SHIPPING WEIGHT	CENTER BORE (IN.)	LOAD RATING
1222683400B	12x4.00	4-4.00	0	2 1/2	10	2.80	1520
1222684400B	12x4.00	5-4.50	0	2 1/2	10	2.80	1520
1322686400B	13x4.50	5-4.50	0	2 1/2	11	3.30	1660
1422675400B	14x6.00	5-4.50	0	3 1/2	16	3.30	1870
1522659400B	15x6.00	5-4.50	0	3 1/2	20	3.30	2150
1522660400B	15x6.00	6-5.50	0	3 1/2	19	4.28	3080
1622669400B	16x6.00	6-5.50	0	3 1/2	27	4.28	3750
1622668400B	16x6.00	8-6.50	0	3 1/2	30	4.90	4480

HIGHWAY STANDARD TRAILER WHEELS - WHITE (BOXED)

PART NUMBER	RIM SIZE	BOLT PATTERN	OFFSET (+/-)	REAR SPACING	SHIPPING WEIGHT	CENTER BORE (IN.)	LOAD RATING
0821466266B	8x3.75	4-4.00	0	2 3/8	5	2.81	910
0821467266B	8x3.75	5-4.50	0	2 3/8	4	2.81	1075
0815293266B	8x5.38	4-4.00	-0.75	2 3/7	6	2.81	910
0815295266B	8x5.38	5-4.50	-0.75	2 3/7	5	2.81	1075
0821654266B	8x7.00	4-4.00	0	4	6	2.50	910
0821637266B	8x7.00	5-4.50	0	4	6	2.81	1075
1021632266B	10x6.00	4-4.00	0	3 1/2	9	2.50	1320
1021583266B	10x6.00	5-4.50	0	3 1/2	9	2.81	1535

HIGHWAY STANDARD TRAILER WHEELS - GALVANIZED (BOXED)

PART NUMBER	RIM SIZE	BOLT PATTERN	OFFSET (+/-)	REAR SPACING	SHIPPING WEIGHT	CENTER BORE (IN.)	LOAD RATING
0821466400B	8x3.75	4-4.00	0	2 3/8	5	2.81	910
0821467400B	8x3.75	5-4.50	0	2 3/8	5	2.81	1075
0821654400B	8x7.00	4-4.00	0	4	6	2.50	910
0821637400B	8x7.00	5-4.50	0	4	6	2.81	1075

[illegible]





TUBES / FLAPS



LAWN AND GARDEN, INDUSTRIAL, TRAILER

SIZE	PRODUCT CODE	VALVE	VALVE ON/OFF-CENTER	UNIT WEIGHT	UNITS / CASE
2.80/2.50 - 4	320050	TR87	ON	1	10
2.80/2.50 - 4	320010	JS87P	ON	1	10
9 x 3.50 - 4	320030	TR87	ON	1	10
9 x 3.50 - 4	320031	JS87P	ON	1	10
4.10/3.50 - 4	320100	TR87	5 mm	1	10
4.10/3.50 - 4	320040	TR13	5 mm	1	10
4.10/3.50 - 4	320020	JS87P	5 mm	1	10
3.40/3.00 - 5	320150	TR87	10 mm	1	10
4.10/3.50 - 5	320200	TR87	10 mm	1	10
4.10/3.50 - 5	320070	TR13	10 mm	1	10
4.10/3.50 - 5	320060	JS87P	10 mm	1	10
11x4.00 - 5	320080	TR87	20 mm	1	10
11 x 6.00 - 5	323520	TR87	10 mm	1	10
4.10/3.50 - 6	320250	TR87	ON	1	10
4.10/3.50 - 6	320160	TR13	10 mm	1	10
13 x 5.00 - 6	320260	TR87	10 mm	1	10
13 x 5.00 - 6	323790	TR13	10 mm	1	10
13x6.50 - 6	320170	TR13	10 mm	1	10
5.30/4.50 - 6	320270	TR87	10 mm	1	10
15 x 6.00 - 6	320290	TR87	20 mm	1	10
15 x 6.00 - 6	323800	TR13	20 mm	1	10
3.50/4.00 - 8	320120	TR13	ON	1	10
3.50/4.00 - 8	320360	TR87	ON	1	10
4.80/4.00 - 8	320400	TR13	10 mm	1	10
4.80/4.00 - 8	320130	TR87	10 mm	1	10
16 x 6.50/7.50 - 8	320420	TR13	25 mm	2	10
18x6.50/7.50/8.50/9.50-8	320410	TR13	25 mm	2	10
20 x 8.00/10.00 - 10	320770	TR13	20 mm	2	10
6.00-12	323843	TR13	20 mm	2	10
4.80/5.30-12 COMBO	320901	TR13	20 mm	2	10
23 x 8.50/9.50/10.50-12	321370	TR13	25 mm	4	10
26 x 12 - 12	321050	TR13	40 mm	4	10
AT20 x 8/10R10	320771	TR6	20 mm	1	10

RADIAL ATV

SIZE	PRODUCT CODE	VALVE	VALVE ON/OFF-CENTER	UNIT WEIGHT	UNITS / CASE
AT16x8.00R7	320035	TR6	20 mm	2	10
AT21/22x11/12R8	320440	TR6	25 mm	2	10
20x7.00R8	320141	TR6	25 mm	2	10
20x7.00-8	320140	TR6	25 mm	2	10
AT25x12/13R9	321520	TR6	35 mm	3	10

RADIAL ATV (continued)

SIZE	PRODUCT CODE	VALVE	VALVE ON/OFF-CENTER	UNIT WEIGHT	UNITS / CASE
AT22/23x8R11/12	321371	TR6	25 mm	4	10
AT24/26x12R12	321051	TR6	40 mm	4	10
AT26x8/9R14	324500	TR6	30 mm	3	10

RADIAL PASSENGER

SIZE	PRODUCT CODE	VALVE	VALVE ON/OFF-CENTER	UNIT WEIGHT	UNITS / CASE
DR12/4.00/4.50/4.80/5.30-12	323844	TR-13	10 mm	1	10

RADIAL LIGHT TRUCK

SIZE	PRODUCT CODE	VALVE	VALVE ON/OFF-CENTER	UNIT WEIGHT	UNITS / CASE
9.50/10R16.5	322320	TR15CW	25 mm	1	6
12R16.5LT	323990	TR15CW	45 mm	1	6

RADIAL HEAVY TRUCK

SIZE	PRODUCT CODE	VALVE	VALVE ON/OFF-CENTER	UNIT WEIGHT	UNITS / CASE
8.25R20	322080	TR442	ON	4.9	4
9.00R20	322090	TR443	ON	6.5	4
10.00R20 12/80R20	322100	TR444	ON	7.3	4
11.00R20 13/80R20	322110	TR444	ON	8.4	4
12.00R 20 14/80R20	322460	TR444	ON	8.6	4
10.00R22	322270	TR444	ON	8.1	4
11.00R22	322280	TR444	ON	8.1	4

HEAVY DUTY BIAS

SIZE	PRODUCT CODE	VALVE	VALVE ON/OFF-CENTER	UNIT WEIGHT	UNITS / CASE
10.00 - 20	322330	TR444	ON	6.8	6

RV AND WIDE BASE TRUCK BIAS AND SKID STEER

SIZE	PRODUCT CODE	VALVE	VALVE ON/OFF-CENTER	UNIT WEIGHT	UNITS / CASE
10/11R15LT	322310	TR13	45 mm	4.4	6

For tube stem and valve stem information and specifications, refer to most recent Tire and Rim Association publications.



LOW PLATFORM RADIAL

SIZE	PRODUCT CODE	VALVE	VALVE ON/ OFF-CENTER	UNIT WEIGHT	UNITS / CASE
7.00/7.50R15TR	322450	TR440	ON	2.4	6
8.25R15TR	322240	TR444	ON	3.1	6
9.00/10.00/ 11.00R15TR	322250	TR444	ON	3.9	6

MOBILE HOME BIAS

SIZE	PRODUCT CODE	VALVE	VALVE ON/ OFF-CENTER	UNIT WEIGHT	UNITS / CASE
7/8/9 - 14.5MH	322290	TR300	25 mm	2.9	6

OTR/CONSTRUCTION/SKID STEER

SIZE	PRODUCT CODE	VALVE	VALVE ON/ OFF-CENTER	UNIT WEIGHT	UNITS / CASE
8.3/9.5/12.5-18/20	322000	TR15CW	33 mm	4	6

RADIAL OTR/CONSTRUCTION/SKID STEER

SIZE	PRODUCT CODE	VALVE	VALVE ON/ OFF-CENTER	UNIT WEIGHT	UNITS / CASE
15R19.5	323131	TR15CW	60 mm	8	3
13.00/14.00R24TG	322341	TR220A	55 mm	17	1
17.5R25	323661	TRJ1175C	ON	8	1
20.5R25	323671	TRJ1175C	ON	19	1
23.5R25	323681	TRJ1175C	ON	26	1

HEAVY DUTY INDUSTRIAL LIFT/FORK TRUCK MINING

SIZE	PRODUCT CODE	VALVE	VALVE ON/ OFF-CENTER	UNIT WEIGHT	UNITS / CASE
5.70/5.00-8NHS	323820	JS2	10 mm	2	36
4.80/4.00-8/9NHS	322410	JS2	10 mm	1	12
6.90/6.00-9	323830	JS2	12 mm	1	28
6.50-10	323840	JS2	12 mm	2	22
7.00-12NHS	322420	TR440	ON	3	6
7.50/8.25-15	323850	TR440	ON	3	14
28/29 x 8/9 - 15	323860	TR440	ON	3	14
28x12-15	323900	TR440	ON	4	10
29x8-15	323920	TR440	ON	3	14
2.50-15	323880	TR440	ON	3	11
3.00-15	323890	TR440	ON	4	10
32x12-15	323910	TR440	ON	4	10
8.25-15	323870	TR442	ON	4	12

FARM FRONT BIAS

SIZE	PRODUCT CODE	VALVE	VALVE ON/ OFF-CENTER	UNIT WEIGHT	UNITS / CASE
4.00/5.50/5.90/ 6.00-15SL	322350	TR15	20 mm	2	6
5.50/5.90/6.00/ 6.40-15/16SL	322120	TR15	20 mm	2	6
6.50/7.00/7.50/7.60 /8.00-15/1	322360	TR15	25 mm	3	6
10.00-15/16SL	322130	TR15CW	25 mm	5	6
11.00-16SL	322370	TR15CW	50 mm	4	6
6.50/7.00/7.50-18SL	322140	TR15	25 mm	3	6
4.00-18/19SL	322380	TR15	15 mm	2	6

REAR FARM RADIAL

SIZE	PRODUCT CODE	VALVE	VALVE ON/ OFF-CENTER	UNIT WEIGHT	UNITS / CASE
9/9.5/10/11.2/12.40R24	323960	TR218A	50 mm	7	4
7.50R24SL, 7.5/8.3/9.5-24	323601	TR218A	40 mm	7	8
13.6/14.9R24	323950	TR218A	55 mm	11	3
14.9R/16.9R/17.5LR24	323760	TR218A	70 mm	13	3
18.4R/19.5LR/21LR24	323770	TR218A	70 mm	17	2
11.2/12.4R28 11.25R28SL	323591	TR218A	66 mm	9	3
13.6/14.9R28/30	323750	TR218A	83 mm	13	3
13.6/14.9R26/28	324110	TR218A	58 mm	11	3
16.9/18.4R26/28	323730	TR218A	89 mm	15	2
14.9R30	323741	TR218A	84 mm	14	3
16.9/18.4R30	323780	TR218A	89 mm	17	2
11.2R34 11.2/12.4R36	323651	TR218A	70 mm	10	3
24.5R32	323742	TR218A	125 mm	25	2
13.6/14.9R34	324120	TR218A	58 mm	13	3
16.9/18.4R34	323700	TR218A	89 mm	19	2
13.6/14.9R36	323621	TR218A	89 mm	16	3
11.2/12.4R38	323631	TR218A	70 mm	10	3
14.9R36 13.6/14.9/ 15.5R-38	323720	TR218A	83 mm	16	3
16.9/18.4R38	323690	TR218A	89 mm	20	2
20.8R38	323710	TR218A	90 mm	26	2
18.4/20.8R42	323740	TR218A	90 mm	21	2
16.9/18.4R46	323693	TR218A	50 mm	23	2

HD SEVERE SERVICE-REAR FARM RADIAL

SIZE	PRODUCT CODE	VALVE	VALVE ON/ OFF-CENTER	UNIT WEIGHT	UNITS / CASE
12-16.5LT	322490	TR15CW	45 mm	1	6
16.9/18.4R38	323691	TR218A	89 mm	22	1
18.4/20.8R42	323692	TR218A	90 mm	27	1
16.9/18.4R46	323694	TR218A	50 mm	26	1

For tube stem and valve stem information and specifications, refer to most recent Tire and Rim Association publications.

FARM IMPLEMENT BIAS

SIZE	PRODUCT CODE	VALVE	VALVE ON /OFF -CENTER	UNIT WEIGHT	UNITS / CASE
6.90/6.00 - 9	321500	TR13	25 mm	2	10
8.5/9.5/11L-14; 8.5/9.5L-15	322390	TR13	25 mm	3	6
11L-15/16SL	322150	TR218A	25 mm	5	6
11L-15/16SL	322400	TR15CW	25 mm	4	6
12.5L-15/16SL	322470	TR218A	45 mm	4	6
12.5L-15/16SL	323810	TR15CW	45 mm	4	6
13.6/14L-16.1	320032	TR218A	45 mm	8	7
16.5/18.4L-16.1	320033	TR218A	65 mm	11	4
21.5L-16.1	320034	TR218A	90 mm	13	2

RADIAL INDUSTRIAL FLAPS

SIZE	PRODUCT CODE	VALVE ON /OFF -CENTER	UNIT WEIGHT	UNITS / CASE
8R3.0	5508	13 mm	0.4	20
8R7.0	12311	ON	1.7	15
9R6.7	11009	10 mm	0.8	20
10R6.7	12310	10 mm	1.1	15
12R6.0	12812	ON	1.4	15
15R10.00	19015	ON	3.9	10
16R6.50/7.00/7.50/8.25	17016	25 mm	2.6	14
15R6.50/7.00/7.50/8.25	17015	ON	2.4	14
20R7.50/8.25	17020	ON	3.2	12
20R8.25	18020	ON	3.8	8
20R9.00/10.00	20520	ON	4.6	7
22R10.00/11.00	20522	ON	5.3	6
20R11.00/12.00	21020	ON	5.5	6
20R13.00/14.00	23020	ON	6.5	4
24R11.1 - Valve Hole 1.2"	19016	32 mm	6.9	4
24R11.1 Center Valve Hole	21024	ON	6.9	5

For tube stem and valve stem information and specifications, refer to most recent Tire and Rim Association publications.

TUBELESS VALVE STEMS

SIZE	PRODUCT CODE	VALVE	VALVE ON /OFF -CENTER	UNIT WEIGHT	UNITS / CASE
TR412	010200000007	0.453	0.88	4.4	6
TR413	010200000005	0.453	1.25	4.4	6
TR600HP*	010200000008	0.453	1.27	4.4	6

* High Pressure

HIGH SPEED TRAILER

SIZE	PRODUCT CODE	VALVE	VALVE ON /OFF -CENTER	UNIT WEIGHT	UNITS / CASE
5.70/5.00 - 8	320450	TR13	25 mm	2	10
570/500-8	322810	TR13	0	1	40
ER12/13	322160	TR13	20 mm	1	10
FR13/14	322010	TR13	20 mm	2	10
GR13/14/15	322020	TR13	25 mm	2	10
KR14/15	322030	TR13	30 mm	3	10
MR14/15	322040	TR13	25 mm	3	10
7/8/9 - 14.5MH	322290	TR300	25 mm	3	6
FR15	322170	TR13	20 mm	2	10
7.00/7.50R15LT	322070	TR150	25 mm	3	10
7.00/7.50R15LT	322230	TR13CW	25 mm	3	10
8.25R15TR	322240	TR444	ON	4	6
9.00/10.00/ 11.00R15TR	322250	TR444	ON	4	6
7.00/7.50R15TR	322450	TR440	ON	3	6
10/11R15LT	322310	TR13	45 mm	5	6
GR/KR16	322050	TR13	25 mm	2	10
7.00/7.50R16LT	322060	TR150	25 mm	3	10
GR/KR16	322190	TR15CW	25 mm	2	10
7.00/7.50R16LT	322200	TR13	25 mm	3	10
7.00/7.50R16LT	322210	TR440	ON	3	10
7.00/7.50R16LT	322220	TR15CW	25 mm	3	10
7.00/7.50R16LT	322430	TR13CW	25 mm	3	10
14R17.5	323111	TR300	0	6	3
7.00/7.50R17/18	322440	TR440	ON	4	10
8.25R20	322080	TR442	ON	5	4
9.00R20	322090	TR443	ON	7	4
10.00R20 12/80R20	322100	TR444	ON	8	4
11.00R20 13/80R20	322110	TR444	ON	9	4
10.00 - 20	322330	TR444	ON	7	6
12.00R 20 14/80R20	322460	TR444	ON	9	4
10.00R22	322270	TR444	ON	9	4
11.00R22	322280	TR444	ON	9	4



INNER TUBE FITMENT CHART

SIZE	PRODUCT CODE	VALVE	VALVE ON/OFF - CENTER	ALSO FITS
4.10/3.50-4	320100	TR-87	5 mm	11 x 4.00 - 4
4.10/3.50 - 5	320200	TR-87	10 mm	11 x 4.00 - 5
13 x 5.00 - 6	320260	TR-87	10 mm	12 x 5.00 - 6, 14 x 4.50 - 6
5.30/4.50 - 6	320270	TR-87	25 mm	13 x 6.50 - 6, 14.5/7.00 - 6
18 x 6.50/7.50 - 8	320410	TR-13	25 mm	18 x 8.50/9.50 - 8, 20 x 8.00/9.00/10.00 - 8
23 x 8.50/9.50 - 12	321370	TR-13	25 mm	22 x 7.50/9.00 - 12, 23/24 x 10.50 - 12
26 x 12.00 - 12	321050	TR-13	40 mm	24 x 12.00 - 12, 26 x 10.50 - 12

RADIAL ATV TUBE FITMENT CHART

SIZE	PRODUCT CODE	VALVE	VALVE ON/OFF - CENTER	ALSO FITS
AT21/22 x 11/12R8	320440	TR6	25 mm	18 x 8-8, AT20 x 7-8, AT22 x 9R8, AT21 x 8R9 18 x 8.5/9.5-8, AT20 x 10/11-8, AT22 x 10R8, AT20 x 7R9 18 x 10/11-8, AT21 x 10/11R8, AT22 x 11R8, AT22 x 7R9 19 x 8.5/9.5-8, AT21 x 12R8, AT22 x 12R8, AT23 x 8R9 19 x 10/11-8, AT22 x 11R9
AT25 x 12/13R9	321520	TR6	35 mm	AT24 x 11R9, AT25 x 11R9, AT24 x 11R10, AT26 x 12R10 AT24 x 12/13R9 AT25 x 12R9 AT25 x 11R10 24 x 13.5-9 AT25 x 12R10 25 x 13.5-9
AT20 x 8/10R10	320771	TR6	20 mm	AT18 x 10R10, AT21 x 7R10, AT22 x 8R10, AT23 x 9R10 AT18 x 11R10, AT22 x 7R10, AT22 x 10R10, AT23 x 10R10 20 x 7.5-10, AT23 x 7R10, AT22 x 11R10 AT20 x 8R10, 22 x 12.5-10 AT20 x 10R10 AT20 x 11R10
AT22/23 x 8R11/12	321371	TR6	25 mm	AT23 x 8-11, AT23 x 8R12, AT23 x 10R12 AT24 x 8-11, AT24 x 8R12, AT24 x 10R12 AT24 x 9-11, AT25 x 8R12, AT25 x 10R12 23.5 x 8-11, AT23 x 9R12
AT24/26 x 12R12	321051	TR6	40 mm	AT24 x 12R12, AT25 x 8R11/12, AT26 x 10R12, AT25 x 11R12 AT25 x 12/13R12, AT26 x 8R11/12, AT26 x 12R12, AT26 x 11R11/12 AT27 x 8R11/12, AT27 x 11/12R12
AT26X8/9R14	324500	TR6	30 mm	AT26X8R14 AT26X9R14

RADIAL LT TUBE FITMENT CHART

SIZE	PRODUCT CODE	VALVE	VALVE ON/OFF - CENTER	ALSO FITS
700/750R15LT	322230	TR13CW	25 mm	670R/710R/750R15LT, P215/75R15 LT215/225/235R15LT, P235/75R15 LT245/70R15LT, P245/70R15 LT255/70R15LT, P255/70R15 670R/710R/750R15LT, P235/245/70R15
GR/HR/LR15LT				
700/750R15	322070	TR150	25 mm	LT215/235/75R15, P255/65R15 P255/60R15 GR/HR/LR16LT
700/750R16LT	322060	TR150	25 mm	LT215/235/85R16 LT225/245/265/75R16

For tube stem and valve stem information and specifications, refer to most recent Tire & Rim Association publications.

RADIAL LT TUBE FITMENT CHART (Continued)

SIZE	PRODUCT CODE	VALVE	VALVE ON/OFF - CENTER	ALSO FITS
700/750R16LT	322200	TR13	25 mm	LR78-16LT, LT235/65R16, P265/75R16, P235/75R16
				LT225/70R16, LT235/70R16, P215/225/75R16LT, P235/65R17
				LT235/75R16, LT245/70R16, P225/70R16, P245/70R16
				LT225/85R16, LT245/75R16, P225/235/85R16, P255/70R16
				LT235/85R16, LT255/70R17, P235/65R16, P255/60R17
				LT255/60R17, LT235/65R17, P235/70R17, P265/70R16
				LT215/235/85R16, P245/75R16, P265/60R17
700/750R16LT		TR15CW	25 mm	GR/HR/LR78-16LT, MR16HD, P215/225/75R16LT
	322220			LT215/235/85R16, LR78-16LT
				LT225/85R16, LT225/70R16
				LT235/70R16, LT235/75R16
				LT245/70R16, LT255/70R16, 8.25R16LT
7.00/7.50R16LT	322210	TR440	ON	
700/750R16LT	322430	TR13CW	25 mm	LT215/235/85R16, MR16HD
700/750R17/18	322440	TR440	ON	P265/60R17, P255/60R17, P235/65R17
				LT255/70R17, LT235/65R17
				LT255/60R17
9.50/10R16.5	322320	TR15CW	25 mm	31 x 10.50R16.5LT, LT265/60D16.5
12R16.5LT	323990	TR15CW	45 mm	33 x 12.50R16.5LT, 305/70D16.5NHS, 305/90D16.5NHS

For tube stem and valve stem information and specifications, refer to most recent Tire & Rim Association publications.

REAR FARM RADIAL

SIZE	PRODUCT CODE	VALVE	VALVE ON/OFF - CENTER	ALSO FITS
11.2/12.4R24	323960	TR218A	50 mm	320/85R24
13.6/14.9R24	323950	TR218A	55 mm	340/85R24, 380/85R24
14.9-16.9/17.5LR24	323760	TR218A	70 mm	460/70R24
18.4/19.5L/21LR24	323770	TR218A	70 mm	500/70R24, 540/70R24
13.6/14.9R28/30	323750	TR218A	83 mm	340/85R28, 380/85R28, 380/85R30
13.6/14.9R26/28	324110	TR218A	58 mm	340/85R28, 380/85R28
16.9/18.4R26/28	323730	TR218A	89 mm	480/80R26
14.9R30	323741	TR218A	84 mm	380/85R30
16.9/18.4R30	323780	TR218A	89 mm	420/90R30, 480/80R30
24.5R32	323742	TR218A	125 mm	650/75R32
13.6/14.9R34	324120	TR218A	58 mm	380/85R34
16.9/18.4R34	323700	TR218A	89 mm	420/85R34, 480/85R34
11.2/12.4R38	323631	TR218A	70 mm	290/90R38
14.9R36, 13.6/14.9/				
15.5R38	323720	TR218A	83 mm	380/80R38
16.9/18.4R38	323690/323691	TR218A	89 mm	480/80R38
20.8R38		TR218A	90 mm	520/85R38
18.4R/20.8R42	323740/323692	TR218A	90 mm	480/80R42, 520/85R42
16.9/18.4R46	323693/323694	TR218A	50 mm	420/80R46, 480/80R46

For tube stem and valve stem information and specifications, refer to most recent Tire & Rim Association publications.



PASSENGER TUBE FITMENT CHART

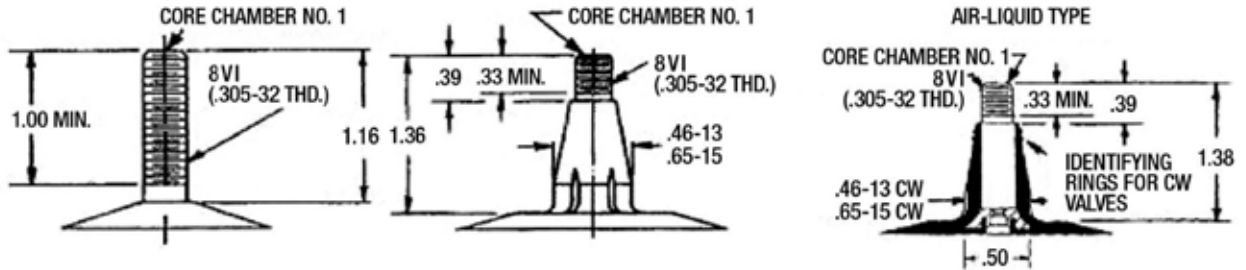
SIZE	PRODUCT CODE	VALVE	VALVE ON/OFF - CENTER	ALSO FITS
DR 12/4.00/4.50/4.80/5.30-12	323844	TR-13	10 mm	DR12, 4.00-12
				4.50-12
				4.80-12
				5.30-12
ER 12/13	322160	TR-13	20 mm	A78-13, 145/80R12/13, 185/60R13, 5.00-12/13
				135R12, 155/80R13, 195/60R13, 5.20-12/13
				145R12/13, 165/70R12/13, AR78-12, 5.50-12
				155R12/13, 155/70R12, BR78-12, 5.60-12/13
	322010	TR-13	20 mm	165R13, 6R12SL
FR 13/14				A78-13/14, 165R14, 185/70R13/14, 6.00-13/14
				B78-13/14, 165/80R13/14, 205/60R13/14, 6.15-13
				A70-13, 175/80R13, 185/60R14, 6.40-13
				B70-13/14, 155/80R14, 195/60R14, 6.50-13
				A60-13/14, 165/75R13/14, AR78-13/14, 6R14SL
				B60-13/14, 175/75R13/14, BR78-13/14, 7R14SL
				175R13, 185/75R13, AR70-13
	322170	TR-13	20 mm	155R14, 175/70R13/14, BR70-13/14
FR 15				A78-15, 175R15, 195/60R15, 5.00-15
				B78-15, 155/80R15, 205/60R15, 5.50-15
				B70-15, 165/80R15, AR78-15, 6.00-15
	322020	TR-13	25 mm	155R15, 175/75R15, BR78-15
				165R15, 185/70R15, BR70-15
GR 13/14/15				C78-13/14/15, G60-14, 215/60R14/15, 7.00R13/14
				D78-13/14/15, 185R13/14/15, 225/60R14/15, 6.50R14
				E78-14/15, 195R13/14/15, 245/60R14, 7.35R14
				F78-14/15, 175R14, CR78-13/14/15, 6.85R15
				C70-13/14/15, 185/80R13/14, DR78-13/14/15, LT195/75R14
				D70-13/14/15, 175/80R14, ER78-14/15, 700R14LT
				E70-14/15, 195/75R13/14/15, FR78-15, 7.9R14LT
				F70-14/15, 185/75R14/15, CR70-13/14/15, 26 x 850R14LT
				C60-14/15, 205/75R14, DR70-13/14/15, 27 x 850R14LT
				D60-14/15, 195/70R13/14/15, ER70-14/15, 27 x 750R15LT
	322030	TR-13	30 mm	E60-14/15, 205/70R13/14/15, FR70-14/15
				F60-14/15, 235/6013/14, 6.70R13/14
KR 14/15				G78-14/15, 225R15, 235/60R15, 7.75R14/15
				H78-14/15, 195/80R15, 245/60R15, 8.00R14/15
				G70-14/15, 215/75R14/15, FR78-14, 8.25R14/15
				H70-14/15, 225/75R14, GR78-14/15, 8.55R15
				H60-14/15, 205/75R15, HR78-14/15
				G60-15, 215/70R14/15, GR70-14/15
	322040	TR-13	25 mm	205R14/15, 225/70R14/15, HR70-14/15
				215R14/15, 255/60R14, 7.50R14/15
MR 14/15				J78-14/15, M60-14/15, 265/60R14/15, LR70-15
				K78-15, N60-15, 275/60R14/15, 8.50R14
				L78-15, 225R14, 255/60R15, 8.85R14/15
				N78-15, 235R15, JR78-14/15, 9.00R14/15

For tube stem and valve stem information and specifications, refer to most recent Tire & Rim Association publications.

PASSENGER TUBE FITMENT CHART (Continued)

SIZE	PRODUCT CODE	VALVE	VALVE ON/OFF - CENTER	ALSO FITS
	322050			J70-14/15, 235/75R14/15, KR78-15, 9.50R14
				K70-15, 225/75R15, LR78-15, 9.15R15
				L70-15, 235/70R14/15, NR78-15
				J60-14, 245/70R14/15, JR70-14/15
				L60-14/15, 255/70R15, KR70-15
GR/KR 16		TR-15	25 mm	F78-16, FR78-16, 5.50R16, 7R16SL
				H78-16, HR78-16, 6.00R16, 8R16SL
				L78-16, JR78-16, 6.50R16
				LR78-16, 6.70R16
				7.00R16
	322190			7.50R16
GR/KR 16		TR-15CW	25 mm	F78-16, FR78-1,6 8.00R16
				H78-16, HR78-16, 8.25R16
				L78-16, LR78-16

For tube stem and valve stem information and specifications, refer to most recent Tire & Rim Association publications.

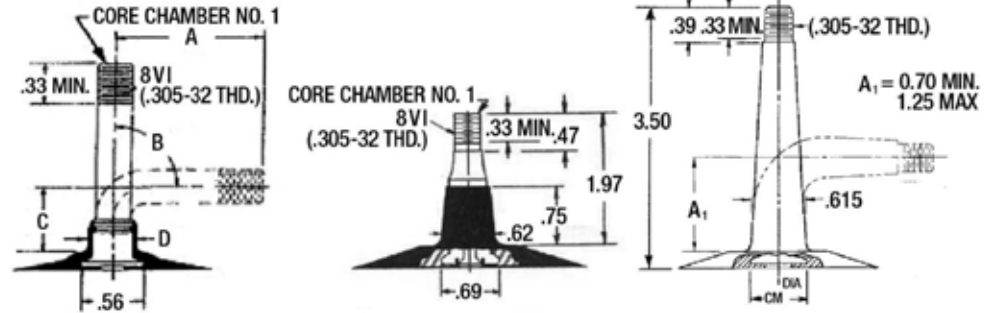


TR 6

TR 13 (TR15)

TR 13CW-TR 15CW*

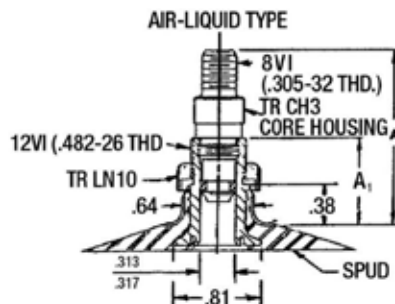
*To be used where liquid fill is used in tubes



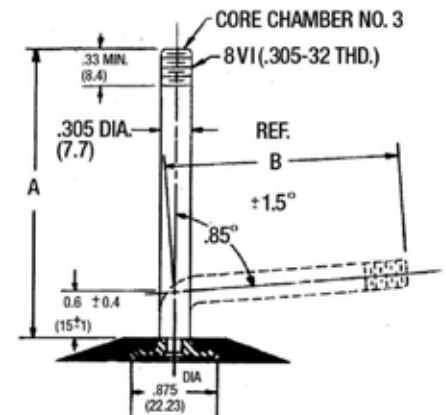
TR 87 / JS 2 / JS 87

TR 300

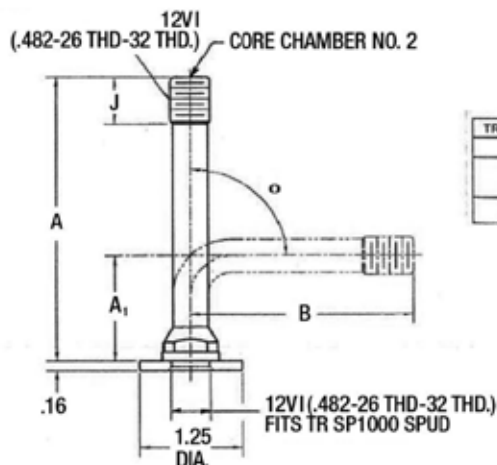
TR 150



TR 218A / 220A

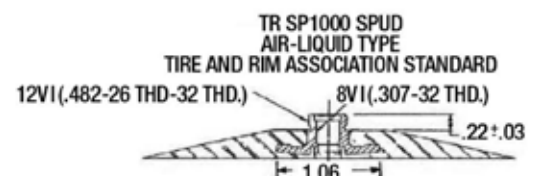


TR 440 SERIES



TR J1175C

TR VALVE NO.	FORM	A	A ₁ ±.06	B	J	Z°
J 1014	A	1.91	—	—	1.44	—
J 1076	A	4.16	—	—	.75	—
J 1076	D	—	2.06	2.31	.75	90
J 1076	E	—	1.38	3.09	.75	88
J 1175	A	5.26	—	—	.75	—
J 1175	C	—	1.38	4.12	.75	88



TR SP1000 SPUD



PROPOSITION 65

California's Proposition 65, also known as the Safe Drinking Water and Toxic Enforcement Act of 1986, requires the Governor of California to publish a list of chemicals known by the state to cause cancer, birth defects or other reproductive harm. The complete list of Prop 65 chemicals is available here:

http://www.oehha.ca.gov/prop65/prop65_list/Newlist.html

This notice is intended to warn Carlstar's customers that some products distributed by the Carlstar Group in California contain chemicals that are included on California's Prop 65 list. Such products include:

Tires	alpha-styrene, butadiene, cadmium, carbon black	cancer / reproductive harm
Wheels	cadmium, beryllium, hexavalent chromium	cancer / reproductive harm
Valve Stems	carbon black	cancer
Sealant	ethylene glycol	reproductive harm

which is [are] known to the State of California to cause both cancer and birth defects or other reproductive harm. For more information go to www.P65Warnings.ca.gov.

Carlstar has chosen to provide this warning based on its knowledge about the presence of one or more Prop 65 chemicals in its products. Carlstar has not attempted to evaluate the level of possible exposure. Products distributed by Carlstar may contain listed chemicals at levels that are below the Proposition 65 level of concern, or could even be zero. Out of an abundance of caution, Carlstar has elected to place the Proposition 65 warning notification on all its products that contain chemicals identified on California's Prop 65 list.

NOTES

This image shows a single sheet of white paper with horizontal ruling lines. The lines are evenly spaced and run across the width of the page. There are no margins, text, or other markings on the paper.



UNITED STATES

- Aiken, SC
- Clinton, TN
- Edwardsville, KS
- Kent, WA
- Fontana, CA
- Franklin (Nashville), TN
- Jackson, TN
- McDonough, GA
- Slinger, WI

Canada

- Edmonton, AB
- Waterloo, ON



Budapest, Hungary

Meizhou, China

Corporate Office
The Carlstar Group, LLC
725 Cool Springs Blvd.
Suite 500
Franklin, TN 37067
Tel: **+1 615-503-0220**
Email: **brand@carlstargroup.com**

© 2023 The Carlstar Group, LLC.
All rights reserved.
Revision 03/23. Part #CSL-L-2004

WWW.CARLSTAR.COM

Customer Service:
USA
Tel: **+1 800-827-1001**
Email: **orders@carlstargroup.com**
Warranty Department:
Tel: **+1 800-260-7959**
Email: **customer.care@carlstargroup.com**

Canada
Waterloo Tel: **1(800)265-6155**
Edmonton Tel: **1(877)842-6275**

AUTHORIZED CARLSTAR DISTRIBUTOR

